



## PRICE & SPECIFICATION BOOK

# INDUSTRIAL USER PRICES HOISTS & ACCESSORIES



Phone: 800.477.5003  
704.694.2156

Fax: 800.374.6853  
704.694.6829

[www.cmworks.com](http://www.cmworks.com)

**Cable Hoists (Aluminum - Wire Rope)**

Model **	Product Code	Single Line			Double Line			Cable Dia. (In.)	Net Wt. (Lbs.)	Ship. Wt. (Lbs.)	User Price *
		Rated Cap. (Ton)	Lift (Ft.)	Min. Hdm. (In.)	Rated Cap. (Ton)	Lift (Ft.)	Min. Hdm. (In.)				
105SB	04640W	1/2	40	20	N/A			3/16	11 1/2	12 1/2	246
115SB	04601W	1/2	23	20	N/A			3/16	10	11	212
115DB	04602W	1/2	23	20	1	11 1/2	27	3/16	13	14	240
505NB	04610W	3/4	17	20	N/A			1/4	10 1/2	11 1/2	239
202WNB	04611W	3/4	17	20	1 1/2	9	27	1/4	13	14	258
434WNB	04620W	3/4	22	20	1 1/2	11	27	1/4	14	15 1/4	293
430CDPB	04621W	3/4	22	20	1 1/2	11	30	1/4	16	17	328
404WNB	04631W	1	17	20	2	8 1/2	27	9/32	15	16 1/2	315
404WNB/MC	04632W	1	17	20	2	8 1/2	27	9/32	15	16 1/2	400

\* Price includes Light Duty Latch Kit on all hooks except 430CDPA. All models have a rapid rewind handwheel.  
 \*\* For " Marine Grade" Cable Hoists with stainless steel cable, insert "SS" at end of model number and **add \$65**.  
**Note:** Units with stainless steel cable must have the hoist capacity derated - Refer to factory for details.  
 † Cable is 7 x19 galvanized flexible aircraft cable. **Note:** 404WNMC includes Marine Grade cable as standard equipment.

Little Mule Cable Hoists are made in the USA in accordance with ASME B30.21 Standard for Manually Lever Operated Hoists, and can be used for lifting, pulling and tensioning applications.  
 (Note: Hoists should not be used to lift people or loads over people.)

**LMG MODELS Wire Grips  
Standard Grip - Spring Loaded**

Model	Product Code	Rated Cap. (Lbs.)	Wire Size / Gage (Minimum)	Wire Size / Gage (Maximum)	Handling Eye Opening (In.)	Net Wt. (Lbs.)	User Price
LMG1000	04451W	1,000	.04 In. / 18 AWG	.394 In. / 1/0 AWG	.625 Dia	1/2	112
LMG2000	04452W	2,000	.109 In. / 8 AWG	.594 In. / 4/0 AWG	1" x 1 1/2"	1	147
LMG4500	04453W	5,000	.18 In. / 6 AWG	.60 In. / 4/0 AWG	1 1/4" x 1 3/4"	3 1/4	163
LMG4500A*	04478W	5,000	.18 In. / 6 AWG	.60 In. / 4/0 AWG	1 1/4" x 1 3/4"	3 1/4	190
LMG4600	04459W	10,000	.30 In. / 1 AWG	.80 In. / 450 MCM	1 1/4" x 1 3/4"	4 1/2	236
LMG4600A*	04479W	10,000	.30 In. / 1 AWG	.80 In. / 450 MCM	1 1/4" x 1 3/4"	4 1/2	263
LMG4800	04471W	12,000	.70 In. / .397 MCM	1.25 In. / 1130 MCM	1 1/4" x 1 3/4"	8	389
LMG4700	04465W	20,000	.70 In. / .397 MCM	1.25 In. / 1130 MCM	2 1/2" x 3 1/2"	21	886

\* Has jaw for use with extra high strength cable. More aggressive tooth design reduces possibility of cable damage caused by slippage.



**Cable Hoist**



**Wire Grips**



**GT**



**LMSC**



**LMR**



## GT (Grip & Pull Wire Rope Lever Tool)

Model Number	Product Code	Rated Capacity (Ton) †	Standard Wire Rope Length* (Ft.)	Wire Rope Dia. (In.)	Ship Wt. (Lbs.)	User Price
GT-1300-32	0013	1	32	5/16	35	831
GT-2000-65	0020	2	65	7/16	79	1372
GT3500-32	0035	3	32	5/8	94	1847

\* Wire rope lengths other than indicated, are not available.

† F.O.B. Abingdon, VA

## Ratchet Lever Hoists

## LMSC Models (Steel)

Model Number	Product Code	Rated Capacity (Ton)	Standard Lift (Ft.)	Min. Dist. Betw. Hooks (In.)	Handle Length (In.)	Handle Pull @ Rated Load (Lbs.)	Ship Wt. (Lbs.)	User Price	Extra Chain Per Lift Ft.*	Price with Load Lifter **
LMSC-1500	09501W	3/4	5	11 7/16	9 1/4	46	14	280	10.40	390
LMSC-1510	09502W	3/4	10	11 7/16	9 1/4	46	16	312	-	422
LMSC-1515	09503W	3/4	15	11 7/16	9 1/4	46	18	338	-	448
LMSC-1520	09504W	3/4	20	11 7/16	9 1/4	46	20	375	-	485
LMSC-2000	09525W	1	5	12 13/32	9 1/4	57	14	322	10.40	432
LMSC-2010	09526W	1	10	12 13/32	9 1/4	57	16	359	-	469
LMSC-2015	09527W	1	15	12 13/32	9 1/4	57	18	396	-	506
LMSC-2020	09528W	1	20	12 13/32	9 1/4	57	20	433	-	543
LMSC-3000	09506W	1 1/2	5	13	14 9/16	59	23	420	11.25	530
LMSC-3010	09507W	1 1/2	10	13	14 9/16	59	26	464	-	574
LMSC-3015	09508W	1 1/2	15	13	14 9/16	59	29	476	-	586
LMSC-3020	09509W	1 1/2	20	13	14 9/16	59	32	502	-	612
LMSC-6000	09511W	3	5	16 15/16	14 9/16	75	35	569	15.95	679
LMSC-6010	09512W	3	10	16 15/16	14 9/16	75	40	620	-	730
LMSC-6015	09513W	3	15	16 15/16	14 9/16	75	45	671	-	781
LMSC-6020	09514W	3	20	16 15/16	14 9/16	75	50	714	-	824
LMSC-12000	09516W	6	5	22 3/4	14 9/16	76	65	812	31.90	922
LMSC-12010	09517W	6	10	22 3/4	14 9/16	76	76	917	-	1027
LMSC-12015	09518W	6	15	22 3/4	14 9/16	76	87	1002	-	1112
LMSC-12020	09519W	6	20	22 3/4	14 9/16	76	98	1088	-	1198

\* Lifts other than standard should be calculated from 5 Ft. price.

\*\* Request Load Limiter at time of order.

Note: A labor installation charge of \$39 will be added for all non-standard lifts.

Bulk chain for LMSC Models is listed on page 5.

## LMR Models (Aluminum)

Model Number	Product Code	Rated Capacity (Ton)	Standard Lift (Ft.)	Min. Dist. Betw. Hooks (In.)	Handle Length (In.)	Handle Pull @ Rated Load (Lbs.)	Ship Wt. (Lbs.)	User Price
LMR-1500	04231W	3/4	5	12	12	37	16	411
LMR-1510	04232W	3/4	10	12	12	37	18	446
LMR-1515	04233W	3/4	15	12	12	37	20	481
LMR-1520	04234W	3/4	20	12	12	37	22	519
LMR-2000	04236W	1	5	13	12	49	16	474
LMR-2010	04237W	1	10	13	12	49	18	508
LMR-2015	04238W	1	15	13	12	49	20	545
LMR-2020	04239W	1	20	13	12	49	22	578
LMR-3000	04241W	1 1/2	5	14 1/2	12	41	26	596
LMR-3010	04242W	1 1/2	10	14 1/2	12	41	30	645
LMR-3015	04243W	1 1/2	15	14 1/2	12	41	34	695
LMR-3020	04244W	1 1/2	20	14 1/2	12	41	38	743
LMR-6000	04246W	3	5	17 1/2	16	61	43	748
LMR-6010	04247W	3	10	17 1/2	16	61	50	845
LMR-6015	04248W	3	15	17 1/2	16	61	57	940
LMR-6020	04249W	3	20	17 1/2	16	61	64	1042

# LMHA Models (Steel)

Model Number	Product Code	Rated Capacity (Ton)	Lift (Ft.)	Min. Dist. Betw. Hooks (In.)	Chain Pull @ Rated Load (Lbs.)	Ship Wt, (Lbs.)	User Price	Extra Chain * Per Lift Ft.	
								Load	Hand
LMHA-1000	04301W	1/2	10	10 1/4	55	20	239	5.70	6.10
LMHA-1015	04302W	1/2	15	10 1/4	55	26	302	-	-
LMHA-1020	04303W	1/2	20	10 1/4	55	30	363	-	-
LMHA-2000	04305W	1	10	11 13/16	53	26	275	7.60	6.10
LMHA-2015	04306W	1	15	11 13/16	53	31	349	-	-
LMHA-2020	04307W	1	20	11 13/16	53	37	418	-	-
LMHA-3000	04309W	1 1/2	10	13 9/16	65	37	418	11.25	6.10
LMHA-3015	04310W	1 1/2	15	13 9/16	65	43	503	-	-
LMHA-3020	04311W	1 1/2	20	13 9/16	65	50	593	-	-
LMHA-4000	04313W	2	10	15	74	46	477	13.70	6.10
LMHA-4015	04314W	2	15	15	74	55	578	-	-
LMHA-4020	04315W	2	20	15	74	63	677	-	-
LMHA-6000	04317W	3	10	17 1/8	84	68	817	14.85	6.10
LMHA-6015	04318W	3	15	17 1/8	84	80	958	-	-
LMHA-6020	04319W	3	20	17 1/8	84	90	1099	-	-
LMHA-10000	04321W	5	10	22 5/8	79	77	1050	33.75	6.10
LMHA-10015	04322W	5	15	22 5/8	79	95	1244	-	-
LMHA-10020	04323W	5	20	22 5/8	79	108	1436	-	-
LMHA-16000	04325W	8	10	32 1/2	77	168	2414	44.55	6.10
LMHA-16020	04327W	8	20	32 1/2	77	234	3070	-	-
LMHA-20000	04329W	10	10	32 1/2	95	168	2586	44.55	6.10
LMHA-20020	04331W	10	20	32 1/2	95	234	3245	-	-
LMHA-24000	04333W	12	10	50 5/8	84	341	4809	74.25	6.10
LMHA-24020	04335W	12	20	50 5/8	84	429	5872	-	-
LMHA-30000	04337W	15	10	50 5/8	103	341	6445	74.25	6.10
LMHA-30020	04339W	15	20	50 5/8	103	429	7505	-	-
LMHA-40000	04341W	20	10	52 3/8	99 x 2 **	550	10506	89.10	12.20
LMHA-50000 †	04345W	25	10	52 7/8	97 x 2 **	704	16451	118.80	12.20
LMHA-60000 †	04349W	30	10	65	104 x 2 **	968	20053	148.50	12.20
LMHA-80000 †	04353W	40	10	73 5/16	101 x 2 **	1430	26750	207.90	12.20
LMHA-100000 †	04357W	50	10	77 5/8	104 x 2 **	1870	49986	297.00	12.20

\* Lifts other than standard should be calculated from 10 Ft. price. Hand chain drop is 2 Ft. less than lift, unless specified otherwise.

Note: A labor installation charge of \$39 will be added for all non-standard lifts and/or hand chain drops.

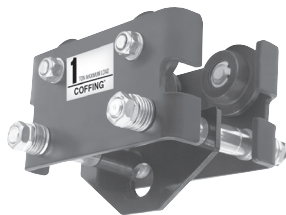
\*\* 20 to 50-Ton models have two hand chains.

† 25, 30, 40 & 50-Ton models are available by special order - consult factory for delivery.

Bulk chain for LMHA Models is listed on page 5.



LMHA



CBTP



LMTP



LMTG



**Bulk Chain for LMSC Models**  
(Minimum Order Quantity 100 Ft.)

For Model Type	Chain Part Number	User Price Per Lineal Ft.
LMSC-1500	T56	10.40
LMSC-2000	T56	10.40
LMSC-3000	KHH5009T	11.25
LMSC-6000	V9	15.95
LMSC-12000*	V9	31.90

\* Hoist is double reeved.

**Bulk Chain for LMHA Models**  
(Minimum Order Quantity 100 Ft.)

For Model Type	Type of Chain	Chain Part Number	User Price Per Lineal Ft.
LMHA-1000	Load Chain	GHH5009T	5.70
LMHA-2000		JHH5009T	7.60
LMHA-3000		KHH5009T	11.25
LMHA-4000		LHH5009T	13.70
LMHA-6000		LSB19-2	14.85
LMHA-10000*		KHH5009T	33.75
All Hand Chain		GHH5009J	3.05

\* Hoist is triple reeved.

**TB602 & TB603 Lever Hoists**

Model Number	Product Code	Rated Capacity (Lbs.)	Standard Lift (Ft.)	Handle Pull @ Rated Load (Lbs.)	Ship Wt. (Lbs.)	User Price
TB 602-5	09490W	550	5	56	6	143
TB 602-10	09491W	550	10	56	7	182
TB 603-5	09493W	1100	5	56	10.5	190
TB 603-10	09494W	1100	10	56	12	237

Optional Carrying Bag with Belt Loop for TB602 \$17.00 each TB603 \$18.00

**MANUAL TROLLEYS**

**CBTP Plain Models**

Model Number	Capacity		Min. Beam Height (In.)	I-Beam Width (In.)	Min. Radius Curve (In.)	Wheel Dia. (In.)	Ship Wt. (Lbs.)	User Price
	Lbs.	Ton						
CBTP-0025	500	1/4	4	2 to 8.7	27	2 1/4	19	155
CBTP-0050	1000	1/2	4	2 to 8.7	27	2 1/4	19	155
CBTP-0100	2000	1	5	2.3 to 8.7	36	2 3/4	26	187
CBTP-0150	3000	1 1/2	6	2.3 to 8.7	45	4 1/4	46	305
CBTP-0200	4000	2	6	2.3 to 8.7	45	4 1/4	46	305
CBTP-0300	6000	3	8	3 to 8.7	55	4 1/4	86	528
CBTP-0500	10000	5	10	3.5 to 8.7	70	4 1/2	130	734

\* Note: Specify complete beam specifications when ordering.

For Patented Track and other special beam applications - consult factory.

Consult Factory for Gear Driven Models

**\*LMT Plain Models**

Model Number	Product Code	Rated Capacity (Ton) †	Beam Height (In.)	Flange Width (In.)	Minimum Radius (In.)	Wheel Dia. (In.)	Ship Wt. (Lbs.)	User Price
LMT-16000A	1641-0800	8	10 - 24	4 5/8 - 7	60	8 1/4	300	1756
LMT-20000A	1641-1000	10	10 - 24	4 5/8 - 7	60	8 1/4	310	2246
LMT-24000A	1641-1200	12	10 - 24	4 5/8 - 7	60	8 1/4	310	2246
LMT-32000A	1641-1600	16	18 - 24	6 - 8	96	11 3/4	800	4368

**\*LMTG Geared Models**

Model Number	Product Code	Rated Capacity (Ton) †	Beam Height (In.)	Flange Width (In.)	Minimum Radius (In.)	Wheel Dia. (In.)	Ship Wt. (Lbs.)	User Price
LMTG-16000A	1642-0800	8	10 - 24	4 5/8 - 7	60	8 1/4	347	2256
LMTG-20000A	1642-1000	10	10 - 24	4 5/8 - 7	60	8 1/4	360	3151
LMTG-24000A	1642-1200	12	10 - 24	4 5/8 - 7	60	8 1/4	360	3151
LMTG-32000A	1642-1600	16	18 - 24	6 - 8	96	11 3/4	895	5525

For Curved Track and wide flange applications - Consult Factory

Note: Standard hand chain drop for LMTG-A is 8 Ft. - additional hand chain is \$8.60 per Ft. of drop.

† LMT- A and LMTG- A trolleys up to 40-Ton capacity available upon request - consult factory.  
LMT- A and LMTG- A Models 8 -20 ton units are supplied with straight side plates with dual tread wheels for operation on flat or tapered beams. 25 ton units are supplied with canted side plates for operation on Standard American I-beams. For other beams or patented track applications, consult factory.

\*Note: Specify complete beam specifications when ordering Little Mule Trolleys.



**Electric Chain Hoists**

**FLC Models**

**Top Hook Suspension**

115/230-1PH-60Hz		230/460V-3 PH-60Hz		No. of Chains	Std. Lift (Ft.)	Lift Spd (FPM)	Mtr H.P.	Top Hook A Dim (In.)	Ship Wt. (Lbs.)	User Price
FLC Model Number	Product Code	FLC Model Number	Product Code							
<b>1/4 Ton</b>										
FLC-0516-1-10	08050W	FLC-0516-3-10	08053W	1	10	16	1/2	18 1/8	65	1935
FLC-0532-1-10	08058W	FLC-0532-3-10	08061W	1	10	32	1/2	18 1/8	79	2053
FLC-0516-1-15	08051W	FLC-0516-3-15	08054W	1	15	16	1/2	18 1/8	69	2041
FLC-0532-1-15	08059W	FLC-0532-3-15	08062W	1	15	32	1/2	18 1/8	83	2159
FLC-0516-1-20	08052W	FLC-0516-3-20	08055W	1	20	16	1/2	18 1/8	73	2147
FLC-0532-1-20	08060W	FLC-0532-3-20	08063W	1	20	32	1/2	18 1/8	87	2265
<b>1/2 Ton</b>										
FLC-1016-1-10	08066W	FLC-1016-3-10	08069W	1	10	16	1/2	18 1/8	79	2053
FLC-1032-1-10	08074W	FLC-1032-3-10	08077W	1	10	32	1	18 1/8	92	2207
FLC-1016-1-15	08067W	FLC-1016-3-15	08070W	1	15	16	1/2	18 1/8	83	2159
FLC-1032-1-15	08075W	FLC-1032-3-15	08078W	1	15	32	1	18 1/8	96	2313
FLC-1016-1-20	08068W	FLC-1016-3-20	08071W	1	20	16	1/2	18 1/8	87	2265
FLC-1032-1-20	08076W	FLC-1032-3-20	08079W	1	20	32	1	18 1/8	100	2419
<b>1 Ton</b>										
FLC-2016-1-10	08082W	FLC-2016-3-10	08085W	1	10	16	1	18 1/8	94	2291
FLC-2016-1-15	08083W	FLC-2016-3-15	08086W	1	15	16	1	18 1/8	98	2397
FLC-2016-1-20	08084W	FLC-2016-3-20	08087W	1	20	16	1	18 1/8	102	2503
<b>2 Ton</b>										
FLC-4008-1-10	08090W	FLC-4008-3-10	08093W	2	10	8	1	20 13/16	104	2718
FLC-4008-1-15	08091W	FLC-4008-3-15	08094W	2	15	8	1	20 13/16	112	2904
FLC-4008-1-20	08092W	FLC-4008-3-20	08095W	2	20	8	1	20 13/16	120	3090

**Note:** Hoist equipped with 15 Ft. power cord. Push-button drop is 4 Ft. less than lift. For special lifts, see below.  
Request **CSA Compliant Hoist** at the time of order.

**Special Lifts, P.B. Drops & Power Cords**

			Maximum Lift	No. of Chains	User Price
<b>For additional lifts - Add to 10 Ft. lift price.</b>					
Extra Ft. of lift	1/8 - 1/2 Ton Capacity		143	1	16.00
Extra Ft. of lift	1 Ton Capacity		143	1	16.00
Extra Ft. of lift	2 Ton Capacity		71	2	32.00
Extra Ft. of P.B. Drop or Power Cord					5.20
Long Lift Limit Switch †	A) Single Chain 51 - 143 Ft.				137.00
	B) Double Chain 26 - 71 Ft.				137.00
Nylon Cover for Outdoor Use					
Product Code	Model Number	Used on Hoist Models	Capacity (Ton)	User Price	
08791W	JLC760-2	FLC0516, FLC0532	1/4	116	
08792W	JLC760-3	FLC1016, FLC1032	1/2	116	
08793W	JLC760-4	FLC2016	1	116	
08794W	JLC760-5	FLC4008	2	116	

† Long Lift Limit Switch required for lifts over 50 Ft. on single chain & 25 Ft. on double chain models.

## FLC Chain Containers

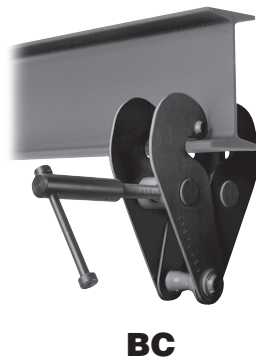
Model Number	Metal Type	Shipping Wt.	User Price
<b>JLC927-1</b>	All models up to 20 ft. single chain, up to 10 ft. double chain	3	Included With Hoists
<b>JLC927-2</b>	All models up to 35 ft. single chain, up to 17 ft. double chain	4	66
<b>JLC927-3</b>	All models up to 50 ft. single chain, up to 25 ft. double chain	5	139
<b>JLC927-4</b>	All models over 50 ft. single chain and 25 ft. double chain	25	461
Fabric Type			
<b>JLC927-20F</b>	All models up to 20 ft. single chain, up to 10 ft. double chain	3 1/2	139
<b>JLC927-35F</b>	All models up to 35 ft. single chain, up to 17 ft. double chain	3 1/2	183
<b>JLC927-50F</b>	All models up to 50 ft. single chain, up to 25 ft. double chain	3 1/2	237
<b>JLC927-70F</b>	All models up to 70 ft. single chain, up to 35 ft. double chain	4	272

## Beam Clamps

## BC Models

Model Number	Product Code	Rated Capacity (Ton)	Flange Width (In.)	Ship. Wt. (Lbs.)	User Price
<b>BC-1</b>	09001W	1	3 - 9	8 1/2	82
<b>BC-2</b>	09002W	2	3 - 9	10 1/2	91
<b>BC-3</b>	09003W	3	3.2 - 12.6	20 1/4	141
<b>BC-5</b>	09004W	5	3.6 - 12.2	24 1/4	176
<b>BC-10</b>	09005W	10	3.6 - 12.6	34	281

Beam Clamps are designed with a 5:1 ultimate strength safety factor and can be used in either manual or powered hoist applications.



**Chain Containers  
Metal      Fabric**

## SLM Hoist

### Single phase / Contactor in Pendant

Model * Number	Product Code	Rated Capacity lbs.	Number Of Chains	Std. Lift (feet)	Lifting Speed (FPM)	Shipping Weight (Lbs.)	User Price
SLM0216NC	15107W	250	1	10	16	26	1182
SLM0316NC	15108W	300	1	10	16	26	1182
SLM0508NC	15110W	500	2	10	8	32	1388
SLM0512NC	15109W	500	1	10	12	26	1449
SLM0608NC	15111W	600	2	10	8	32	1388
SLM1006NC	15112W	1000	2	10	6	32	1656



## SLM Hoist

### Single phase / Contactor in Hoist

Model Number	Product Code	Rated Capacity lbs.	Number Of Chains	Std. Lift (feet)	Lifting Speed (FPM)	Shipping Weight (Lbs.)	User Price
SLM0216-1	15101W	250	1	10	16	26	1323
SLM0316-1	15102W	300	1	10	16	28	1323
SLM0508-1	15104W	500	2	10	8	34	1527
SLM0512-1	15103W	500	1	10	12	28	1593
SLM0608-1	15105W	600	2	10	8	34	1527
SLM1006-1	15106W	1000	3	10	6	34	1731

## SLM Hoist

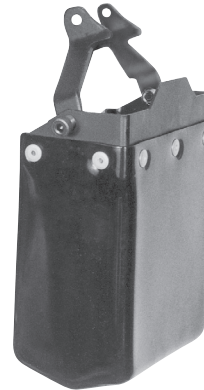
### 3 phase / \*575-3-60 Volt Models Available

Model Number	230-3-60 Product Code	460-3-60 Product Code	Rated Capacity lbs.	Number Of Chains	Std. Lift (feet)	Lifting Speed (FPM)	Shipping Weight (Lbs.)	User Price
SLM0216-3	15113W	15130W	250	1	10	16	28	1323
SLM0224-3	15114W	15131W	250	1	10	24	28	1355
SLM0240-3	15115W	15132W	250	1	10	40	28	1387
SLM0316-3	15116W	15133W	300	1	10	16	28	1323
SLM0324-3	15117W	15134W	300	1	10	24	28	1355
SLM0340-3	15118W	15135W	300	1	10	40	28	1387
SLM0508-3	15122W	15139W	500	2	10	8	34	1527
SLM0512-3	15120W	15137W	500	1	10	12	28	1593
SLM0516-3	15119W	15136W	500	1	10	16	28	1623
SLM0520-3	15123W	15140W	500	2	10	20	34	1589
SLM0524-3	15121W	15138W	500	1	10	24	28	1655
SLM0608-3	15124W	15141W	600	2	10	8	34	1527
SLM0612-3	15125W	15142W	600	2	10	12	34	1558
SLM0620-3	15126W	15143W	600	2	10	20	34	1589
SLM1006-3	15127W	15144W	1000	2	10	6	34	1731
SLM1008-3	15128W	15145W	1000	2	10	8	32	1745
SLM1012-3	15129W	15146W	1000	2	10	12	32	1762

For lifts other than standard, begin with 10ft. Lift and add extra charges:  
 Extra chain per ft. of lift: **\$10.66** single chain hoist, **\$21.32** double chain hoist  
 Extra PB cord (standard 4ft. Shorter than lift) **\$6.00** per ft.  
 Extra Power cord (standard 6ft.) **\$6.00** per ft.  
 All units are supplied with 1/6 hp electric motors

## SLM Chain Containers

Product Code	Maximum length of lift		Shipping Wt.	User Price
	1-Chain Single	2-Chain Double		
2063	10	N/A	1	50
2064	20	10	1.5	57
2065	40	20	1.5	66
2066	80	40	1.5	72
2067	120	60	2.25	124





## WARRANTY

Every hoist is thoroughly inspected and tested prior to shipment from the factory. Should any problems develop, return the complete hoist prepaid to your nearest Little Mule® Authorized Warranty Repair Station. If inspection reveals that the problem is caused by defective workmanship or material, repairs will be made without charge and the hoist will be returned, transportation prepaid.

This warranty does not apply where: (1) deterioration is caused by normal wear, abuse, improper or inadequate power supply, eccentric or side winding, overloading, chemical or abrasive actions, improper maintenance or excessive heat; (2) problems resulted from repairs,

modifications or alterations made by persons other than factory or Little Mule Authorized Warranty Repair Station personnel; (3) the hoist has been abused or damaged as a result of an accident; (4) repair parts or accessories other than those supplied by Little Mule are used on the hoist. Equipment and accessories not of the seller's manufacture are warranted only to the extent that they are warranted by the manufacturer.

**EXCEPT AS STATED HEREIN, LITTLE MULE PRODUCTS MAKES NO OTHER WARRANTIES, EXPRESSED OR IMPLIED, INCLUDING WARRANTIES OF MERCHANTABILITY AND FITNESS FOR A PARTICULAR PURPOSE.**

***All Prices Are In U.S. Dollars and are subject to change without notice.***

*Prices in effect at time of shipment will apply.*

*For Applications Not Listed, Please Consult Factory*

## ⚠ WARNING

**Overloading and Improper Use Can Result In Injury**

**To Avoid Injury:**

- Do not exceed working load limit, load rating, or capacity.
- Do not use to lift people or loads over people.
- Use only alloy chain and attachments for overhead lifting.
- Read and follow all instructions.