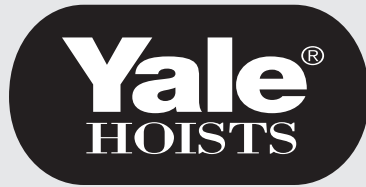


Schedule # Y8070PL-0411

Prices effective April 1, 2011

All prices are F.O.B. Wadesboro, NC



SHAW-BOX®

PRICE & SPECIFICATION BOOK

Y80 SERIES 800 SERIES 700 SERIES SIZE 2 MONORAIL HOISTS ELECTRIC • AIR • EXPLOSION PROOF



Phone: 800.888.0985
800.424.7248

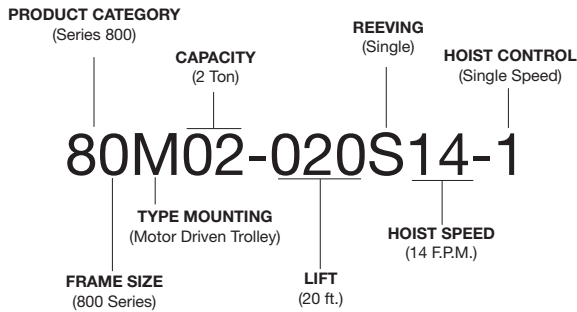
Fax: 716.698.5644
330.424.3126

www.cmworks.com

This catalog contains pricing for the Shaw-Box 800 Series, 700 Series Size 2 and the Yale Y80 Series Wire Rope Hoists. If a desired hoist or hoist option is not found in this booklet please consult your Yale® Shaw-Box® field sales representative or the CMCO Customer Service Department

Product Numbering System

Hoists - Example:



Index

Subject Page No.

Yale Y80/Shaw-Box 800 Series Electric Hoists	
Standard Features	
Single and Double Reeved	3
Pricing	
1/2-Ton Capacity Single and Double Reeved	4
1-Ton Capacity Single and Double Reeved	5
2-Ton Capacity Single and Double Reeved	6
3-Ton Capacity Single Reeved	7
5-Ton Capacity Single Reeved	8
Yale Y80/Shaw-Box 800 Series Air Hoists	
Standard Features	
Single and Double Reeved	9
Pricing	
1-Ton Capacity Single and Double Reeved	10
2-Ton Capacity Single and Double Reeved	11
3-Ton Capacity Single Reeved	12
5-Ton Capacity Single Reeved	13
Options Pricing Index for Y80/800 Series Electric	14
Electric Hoist Options Pricing	15-21
Air Options Pricing	22
Explosion Proof Standards	23-24

Shaw-Box 700 Series Size 2 Electric Hoists	
Standard Features	
Single and Double Reeved Lug Mounted	25
Pricing	
3, 5, 7½ & 10 Ton Capacity Single Reeved.....	26
1 & 3 Ton Capacity Double Reeved	27
5 & 7½-Ton Capacity Double Reeved	28

Subject Page No.

Standard Features	
Single Reeved Deck Mounted	29
Pricing	
3, 5, 7½ & 10 Ton Capacity Single Reeved	30
Options Pricing for 700 Series Size 2 Electric Hoists	
	31-35
Top Running Trolleys	
Standard Features	
Size 2 and DMR Top-Running Trolleys	36
Pricing - Size 2	
5-Ton Capacity Single Reeved	37
7½-Ton Capacity Single Reeved	38
10-Ton Capacity Single Reeved	39
5-Ton Capacity Double Reeved.....	40
7½-Ton Capacity Double Reeved	41
Options Pricing for Size 2 Top Running Trolleys	
	42-46



WARNING

To Avoid Injury:

- Do not exceed working load limit, load rating, or capacity.
- Do not use to lift people or loads over people.
- Read and follow all instructions.

Standard Features

Industrial User Price List

ELECTRIC WIRE ROPE

Y80 - 800 Series

Electric Hoists with Motor Driven Trolleys

Feature	1/2 Ton	1 Ton	2 Ton	3 Ton	5 Ton
Service Class	H-4	H-4	H-4	H-4	H-4
Reeving - Single	2 PS - 1/4"	2 PS - 1/4"	2 PS - 5/16"	4 PS - 5/16"	6 PS - 5/16"
Reeving - Double	4 PD - 3/16"	4 PD - 3/16"	4 PD - 1/4"	-	-
Hoist Gearing	Triple reduction Helical/Spur	Triple reduction Helical/Spur	Triple reduction Helical/Spur	Triple reduction Helical/Spur	Triple reduction Helical/Spur
Hook Assembly	Bearing Thrust Washer 360 degree rotate	Bearing Thrust Washer 360 degree rotate	Bearing Thrust Washer 360 degree rotate	Bearing-mounted 360 degree rotate	Bearing-mounted 360 degree rotate
Hoist Motor	30-minute rated TENV	30-minute rated TENV	30-minute rated TENV	30-minute rated TENV	30-minute rated TENV
Hoist Motor Brake (AC)	150% nominal torque, disc	150% nominal torque, disc	150% nominal torque, disc	150% nominal torque, disc	150% nominal torque, disc
Load Brake	Weston type Roller Ratchet	Weston type Roller Ratchet	Weston type Roller Ratchet	Weston type Roller Ratchet	Weston type Roller Ratchet
Hoist Control	1-speed	1-speed	1-speed	1-speed	1-speed
Control Circuit voltage	115 Volts	115 Volts	115 Volts	115 Volts	115 Volts
Hoist Limit Switch	Upper block control circuit	Upper block control circuit	Upper block control circuit	Upper block control circuit	Upper block control circuit
Rope Drum Diameter	7-1/2"	7-1/2"	7-1/2"	7-1/2"	7-1/2"
Rope Drum Material	Cast Iron	Cast Iron	Cast Iron	Cast Iron	Cast Iron
Sheave Diameter	5"	5"	6" - Single Reeved 5" - Double Reeved	6"	6"
Sheave Material	Steel	Steel	Steel	Steel	Steel
Trolley Gearing	Worm	Worm	Worm	Worm	Worm
Trolley Motor	30-minute rated TENV	30-minute rated TENV	30-minute rated TENV	30-minute rated TENV	30-minute rated TENV
Trolley Brake	Optional AC Disc	Optional AC Disc	Optional AC Disc	Optional AC Disc	Optional AC Disc
Trolley Control	1-speed	1-speed	1-speed	1-speed	1-speed
Wheels	4"	4"	4"	4" for 45' lift 6-1/2" for 30' lift	6-1/2"
Bumpers	Optional Rubber	Optional Rubber	Optional Rubber	Optional Rubber	Optional Rubber
Bearings	Anti-friction	Anti-friction	Anti-friction	Anti-friction	Anti-friction
Motor TAS	Standard	Standard	Standard	Standard	Standard
Control Enclosure	NEMA 1	NEMA 1	NEMA 1	NEMA 1	NEMA 1

1/2 Ton

Industrial User Price List

ELECTRIC WIRE ROPE

Y80 - 800 Series

Standard Headroom Single Reeved

Catalog Number	Lift Ft.	Spd fpm	Mtr HP	No. Ropes Dia.	Headroom (inches)		Type Suspension								Hoist 2 Speed Adder
							Lug Mounted		Push Trolley		Hand Geared Trolley		Motorized Trolley		
					Lug Mtd.	Trolley	Price	Wt.	Price	Wt.	Price	Wt.	Price	Wt.	
†80††.5-025S18-†††	25	18	1	2-1/4	21-3/4	22-15/16	3737	190	4258	213	4715	230	5962	260	591
†80††.5-025S35-†††	25	35	2	2-1/4	21-3/4	22-15/16	3737	190	4258	213	4715	230	5962	260	591
†80††.5-025S50-†††	25	50*	4	2-1/4	21-3/4	22-15/16	4406	215	4926	238	5383	255	6631	291	591
†80††.5-050S18-†††	50	18	1	2-1/4	21-3/4	22-11/16	4608	220	5186	263	5674	280	6725	385	591
†80††.5-050S35-†††	50	35	2	2-1/4	21-3/4	22-11/16	4608	220	5186	263	5674	280	6725	385	591
†80††.5-050S50-†††	50	50*	4	2-1/4	21-3/4	22-11/16	5236	245	5815	288	6303	305	7354	416	591

Standard Headroom Double Reeved

†80††.5-018D18-†††	18	18	1	4-3/16	21-3/4	22-15/16	4298	190	4820	213	5275	230	6525	260	591
†80††.5-018D35-†††	18	35	2	4-3/16	21-3/4	22-15/16	4298	190	4820	213	5275	230	6525	260	591
†80††.5-018D50-†††	18	50*	4	4-3/16	21-3/4	22-15/16	5459	215	5980	238	6437	255	7684	291	591
†80††.5-034D18-†††	34	18	1	4-3/16	21-3/4	22-15/16	5437	220	5958	263	6414	280	7663	385	591
†80††.5-034D35-†††	34	35	2	4-3/16	21-3/4	22-15/16	5437	220	5958	263	6414	280	7663	385	591
†80††.5-034D50-†††	34	50*	4	4-3/16	21-3/4	22-15/16	6505	245	7025	288	7481	305	8731	416	591
†80††.5-047D18-†††	47	18	1	4-3/16	22-3/4	23-15/16	6474	220	7333	263	7918	280	8700	385	591
†80††.5-047D35-†††	47	35	2	4-3/16	22-3/4	23-15/16	6474	220	7333	263	7918	280	8700	385	591
†80††.5-047D50-†††	47	50*	4	4-3/16	22-3/4	23-15/16	7543	360	8401	500	8986	550	9769	591	591

† For a Y80 add a "Y" prefix.

†† To Complete catalog number: select type of hoist suspension by replacing †† in catalog number with L for Lug Mounting, P for Push Trolley, H for Hand Geared Trolley or M for Motor Driven Trolley.

††† Select required speed points by replacing ††† in catalog number with 1 or 2 to the base catalog number. Hoist adder for 2 speed is for 3:1 ratio control and is to be added to the single base price. Use V for Variable Frequency Control. Price adders for variable frequency hoist control are found in the Options Section.

* 3 h.p. for 2-Speed with 3:1 ratio.

Note: Weights are for single speed hoists.

Motor-Driven only Trolley Specifications

Hoist Lift (ft.)	Trolley								
	Speed (fpm)	H.P.	Wheel Diameter	Minimum Radius	Beam Flange Width Range			2-Speed Add (3:1)	460 Volt VFC Add
					Standard	1st Ext.	2nd Ext.		
18	75	1/4	4"	3' - 6"	3" - 5"	5-1/8" - 7-1/4"	7-1/2" - 9-1/8"	497	1122
25	75	1/4	4"	3' - 6"	3" - 5"	5-1/8" - 7-1/4"	7-1/2" - 9-1/8"	497	1122
34	50	1/4	4"	3' - 6"	3" - 5"	5-1/8" - 7-1/4"	7-1/2" - 9-1/8"	497	1122
47	50	1/4	4"	5' - 0"	4" - 6-1/4"	6-3/8" - 8-5/8"	8-3/4" - 11"	497	1122
50	60	1/4	4"	5' - 0"	3-5/8" - 6"	6-1/4" - 8-5/8"	8-7/8" - 11-1/4"	497	1122

Trolley extension adders for wider beam flanges

1st Extension Add **\$61** for single lug, x2 for double lug.

2nd Extension Add **\$122** for single lug, x2 for double lug.

1 Ton

Industrial User Price List

ELECTRIC WIRE ROPE

Y80 - 800 Series

Standard Headroom Single Reeved

Catalog Number	Lift Ft.	Spd fpm	Mtr HP	No. Ropes Dia.	Headroom (inches)		Type Suspension								Hoist 2 Speed Adder
							Lug Mounted		Push Trolley		Hand Geared Trolley		Motorized Trolley		
					Lug Mtd.	Trolley	Price	Wt.	Price	Wt.	Price	Wt.	Price	Wt.	
†80††01-025S18-†††	25	18	2	2-1/4	21-3/4	22-15/16	4016	190	4536	213	4993	230	6241	266	591
†80††01-025S28-†††	25	28	2	2-1/4	21-3/4	22-15/16	4016	215	4536	238	4993	255	6241	291	591
†80††01-025S50-†††	25	*50	4	2-1/4	21-3/4	22-15/16	5126	215	5645	238	6103	255	7351	291	591
†80††01-050S18-†††	50	18	2	2-1/4	21-3/4	22-11/16	4890	220	5467	263	5958	290	7009	385	591
†80††01-050S28-†††	50	28	2	2-1/4	21-3/4	22-11/16	4890	250	5467	293	5958	310	7009	415	591
†80††01-050S50-†††	50	*50	4	2-1/4	21-3/4	22-11/16	5998	250	6576	293	7064	310	8114	415	591

Standard Headroom Double Reeved

†80††01-018D18-†††	18	18	2	4-3/16	21-3/4	22-15/16	4392	190	4912	213	5369	230	6617	266	591
†80††01-018D28-†††	18	28	2	4-3/16	21-3/4	22-15/16	4392	215	4912	238	5369	255	6617	291	591
†80††01-018D50-†††	18	*50	4	4-3/16	21-3/4	22-15/16	5526	215	6048	238	6504	255	7752	291	591
†80††01-034D18-†††	34	18	2	4-3/16	21-3/4	22-15/16	5504	220	6024	263	6480	290	7728	385	591
†80††01-034D28-†††	34	28	2	4-3/16	21-3/4	22-15/16	5504	250	6024	293	6480	310	7728	415	591
†80††01-034D50-†††	34	*50	4	4-3/16	21-3/4	22-15/16	6572	250	7092	293	7547	310	8797	415	591
†80††01-047D18-†††	47	18	2	4-3/16	22-3/4	23-15/16	6542	305	7399	445	7984	530	8766	495	591
†80††01-047D28-†††	47	28	2	4-3/16	22-3/4	23-15/16	6542	335	7399	475	7984	560	8766	525	591
†80††01-047D50-†††	47	*50	4	4-3/16	22-3/4	23-15/16	7608	335	8465	475	9052	560	9833	525	591

† For a Y80 add a "Y" prefix.

†† To Complete catalog number: select type of hoist suspension by replacing †† in catalog number with L for Lug Mounting, P for Push Trolley, H for Hand Geared Trolley or M for Motor Driven Trolley.

††† Select required speed points by replacing ††† in catalog number with 1 or 2 to the base catalog number. Hoist adder for 2 speed is for 3:1 ratio control (except where noted *2:1) and is to be added to the single base price. Use V for Variable Frequency Control. Price adders for variable frequency hoist control are found in the Options Section.

* 4/2 hp for 2 speed with 2:1 ratio.

Note: Weights are for single speed hoists.

Motor-Driven only Trolley Specifications

Hoist Lift (ft.)	Trolley								
	Speed (fpm)	H.P.	Wheel Diameter	Minimum Radius	Beam Flange Width Range			2-Speed Add (3:1)	460 Volt VFC Add
					Standard	1st Ext.	2nd Ext.		
18	75	1/4	4"	3' - 6"	3" - 5"	5-1/8" - 7-1/4"	7-1/2" - 9-1/8"	497	1122
25	75	1/4	4"	3' - 6"	3" - 5"	5-1/8" - 7-1/4"	7-1/2" - 9-1/8"	497	1122
34	50	1/4	4"	3' - 6"	3" - 5"	5-1/8" - 7-1/4"	7-1/2" - 9-1/8"	497	1122
47	50	1/4	4"	5' - 0"	4" - 6-1/4"	6-3/8" - 8-5/8"	8-3/4" - 11"	497	1122
50	60	1/4	4"	5' - 0"	3-5/8" - 6"	6-1/4" - 8-5/8"	8-7/8" - 11-1/4"	497	1122

Trolley extension adders for wider beam flanges

1st Extension Add **\$61** for single lug, x2 for double lug.

2nd Extension Add **\$122** for single lug, x2 for double lug.

2 Ton

Industrial User Price List

ELECTRIC WIRE ROPE

Y80 - 800 Series

Standard Headroom Single Reeved

Catalog Number	Lift Ft.	Spd fpm	Mtr HP	No. Ropes Dia.	Headroom (inches)		Type Suspension								Hoist 2 Speed Adder
							Lug Mounted		Push Trolley		Hand Geared Trolley		Motorized Trolley		
					Lug Mtd.	Trolley	Price	Wt.	Price	Wt.	Price	Wt.	Price	Wt.	
†80††02-020S14-†††	20	14	2	2-5/16	24-5/16	24-7/16	3919	220	4497	263	4985	280	6035	385	591
†80††02-020S28-†††	20	*28	4	2-5/16	24-5/16	24-7/16	4971	220	5548	263	6038	280	7089	385	591
†80††02-040S14-†††	40	14	2	2-5/16	24-5/16	24-7/16	4950	245	5527	288	6017	305	7068	410	591
†80††02-040S28-†††	40	*28	4	2-5/16	24-5/16	24-7/16	5663	245	6241	288	6732	305	7781	410	591

Standard Headroom Double Reeved

†80††02-014D14-†††	14	14	2	4-1/4	22-3/8	23-5/16	4816	220	5395	263	5884	280	6934	385	591
†80††02-014D28-†††	14	*28	4	4-1/4	22-3/8	23-5/16	5882	220	6462	263	6950	280	8000	385	591
†80††02-025D14-†††	25	14	2	4-1/4	22-3/8	23-5/16	5022	245	5601	288	6090	305	7141	410	591
†80††02-025D28-†††	25	*28	4	4-1/4	22-3/8	23-5/16	6091	245	6670	288	7158	305	8209	410	591
†80††02-036D14-†††	36	14	2	4-1/4	23-1/4	24-7/16	5710	335	6567	475	7153	525	7935	560	591
†80††02-036D28-†††	36	*28	4	4-1/4	23-1/4	24-7/16	6665	335	7522	475	8108	525	8890	560	591

† For a Y80 add a "Y" prefix.

†† To Complete catalog number: select type of hoist suspension by replacing †† in catalog number with L for Lug Mounting, P for Push Trolley, H for Hand Geared Trolley or M for Motor Driven Trolley.

††† Select required speed points by replacing ††† in catalog number with 1 or 2 to the base catalog number. Hoist adder for 2 speed is for 3:1 ratio control (except where noted *2:1) and is to be added to the single base price. Use V for Variable Frequency Control. Price adders for variable frequency hoist control are found in the Options Section.

* 4/2 hp for 2 speed with 2:1 ratio.

Note: Weights are for single speed hoists.

Motor-Driven only Trolley Specifications

Hoist Lift (ft.)	Trolley								
	Speed (fpm)	H.P.	Wheel Diameter	Minimum Radius	Beam Flange Width Range			2-Speed Add (3:1)	460 Volt VFC Add
					Standard	1st Ext.	2nd Ext.		
14	60	1/4	4"	5' - 0"	3-5/8" - 6"	6-1/4" - 8-5/8"	8-7/8" - 11-1/4"	497	1122
20	60	1/4	4"	5' - 0"	3-5/8" - 6"	6-1/4" - 8-5/8"	8-7/8" - 11-1/4"	497	1122
25	60	1/4	4"	5' - 0"	3-5/8" - 6"	6-1/4" - 8-5/8"	8-7/8" - 11-1/4"	497	1122
36	50	1/4	4"	5' - 0"	4" - 6-1/4"	6-3/8" - 8-5/8"	8-3/4" - 11"	497	1122
40	60	1/4	4"	5' - 0"	3-5/8" - 6"	6-1/4" - 8-5/8"	8-7/8" - 11-1/4"	497	1122

Trolley extension adders for wider beam flanges

1st Extension Add **\$61** for single lug, x2 for double lug.

2nd Extension Add **\$122** for single lug, x2 for double lug.

3 Ton

Industrial User Price List

ELECTRIC WIRE ROPE

Y80 - 800 Series

Standard Headroom Single Reeved

Catalog Number	Lift Ft.	Spd fpm	Mtr HP	No. Ropes Dia.	Headroom (inches)		Type Suspension								Hoist 2 Speed Adder
							Lug Mounted		Push Trolley		Hand Geared Trolley		Motorized Trolley		
					Lug Mtd.	Trolley	Price	Wt.	Price	Wt.	Price	Wt.	Price	Wt.	
†80††03-030S09-†††	30	9	2	4-5/16	26	27-3/16	5233	310	6416	450	7242	500	7495	535	591
†80††03-030S18-†††	30	*18	4	4-5/16	26	27-3/16	6788	335	7971	475	8797	525	9051	560	591
†80††03-045S09-†††	45	9	2	4-5/16	26-7/8	28-1/16	6081	500	7795	680	8380	725	9163	730	591
†80††03-045S18-†††	45	*18	4	4-5/16	26-7/8	28-1/16	7697	525	9411	705	9996	750	10779	755	591

† For a Y80 add a "Y" prefix.

†† To Complete catalog number: select type of hoist suspension by replacing †† in catalog number with L for Lug Mounting, P for Push Trolley, H for Hand Geared Trolley or M for Motor Driven Trolley.

††† Select required speed points by replacing ††† in catalog number with 1 or 2 to the base catalog number. Hoist adder for 2 speed is for 3:1 ratio control (except where noted *2:1) and is to be added to the single base price. Use V for Variable Frequency Control. Price adders for variable frequency hoist control are found in the Options Section.

* 4/2 hp for 2 speed with 2:1 ratio.

Note: Weights are for single speed hoists.

Motor-Driven only Trolley Specifications

Hoist Lift (ft.)	Trolley								
	Speed (fpm)	H.P.	Wheel Diameter	Minimum Radius	Beam Flange Width Range			2-Speed Add (3:1)	460 Volt VFC Add
					Standard	1st Ext.	2nd Ext.		
30	50	1/2	6-1/2"	7' - 0"	4" - 6-1/4"	6-3/8" - 8-5/8"	8-3/4" - 11"	497	1122
45*	50	1/2	4"	**	4" - 6-1/4"	6-3/8" - 8-5/8"	8-3/4" - 11"	497	1122

Trolley extension adders for wider beam flanges
 1st Extension Add **\$61** for single lug, x2 for double lug.
 2nd Extension Add **\$122** for single lug, x2 for double lug.

*Double Lug Model
 ** Straight Track only

5 Ton

Industrial User Price List

ELECTRIC WIRE ROPE

Y80 - 800 Series

Standard Headroom Single Reeved

Catalog Number	Lift Ft.	Spd fpm	Mtr HP	No. Ropes Dia.	Headroom (inches)		Type Suspension								Hoist 2 Speed Adder
							Lug Mounted		Push Trolley		Hand Geared Trolley		Motorized Trolley		
							Price	Wt.	Price	Wt.	Price	Wt.	Price	Wt.	
†80††05-020S10-†††	20	*10	4	6-5/16	27-3/4	29-1/16	6634	355	7816	495	8644	580	8896	545	591
†80††05-030S10-†††	30	*10	4	6-5/16	27-3/4	29-1/16	7082	355	9448	495	10274	580	10527	545	591

† For a Y80 add a "Y" prefix.

†† To Complete catalog number: select type of hoist suspension by replacing †† in catalog number with L for Lug Mounting, P for Push Trolley, H for Hand Geared Trolley or M for Motor Driven Trolley.

††† Select required speed points by replacing ††† in catalog number with 1 or 2 to the base catalog number. Hoist adder for 2 speed is for 3:1 ratio control and is to be added to the single base price. Use V for Variable Frequency Control. Price adders for variable frequency hoist control are found in the Options Section.

* 4/2 hp for 2 speed with 2:1 ratio.

Note: Weights are for single speed hoists.

Motor-Driven only Trolley Specifications

Hoist Lift (ft.)	Trolley								
	Speed (fpm)	H.P.	Wheel Diameter	Minimum Radius	Beam Flange Width Range			2-Speed Add (3:1)	460 Volt VFC Add
					Standard	1st Ext.	2nd Ext.		
20	50	1/2	6-1/2"	7' - 0"	4" - 6-1/4"	6-3/8" - 8-5/8"	8-3/4" - 11"	497	1122
30*	50	1/2	6-1/2"	**	4" - 6-1/4"	6-3/8" - 8-5/8"	8-3/4" - 11"	497	1122

Trolley extension adders for wider beam flanges

1st Extension Add **\$61** for single lug, x2 for double lug.

2nd Extension Add **\$122** for single lug, x2 for double lug.

*Double Lug Model

** Straight Track only

Standard Features

Industrial User Price List

AIR WIRE ROPE

Y80 - 800 Series

Air Hoists with Motor Driven Trolleys

Feature	1 Ton	2 Ton	3 Ton	5 Ton
Service Class	H-4	H-4	H-4	H-4
Reeving - Single	2 PS - 1/4"	2 PS - 5/16"	4 PS - 5/16"	6 PS - 5/16"
Reeving - Double	4 PD - 3/16"	4 PD - 1/4"	-	-
Hoist Gearing	Triple reduction Helical/Spur	Triple reduction Helical/Spur	Triple reduction Helical/Spur	Triple reduction Helical/Spur
Hook Assembly	Bearing Thrust Washer 360 degree rotate	Bearing Thrust Washer 360 degree rotate	Bearing-mounted 360 degree rotate	Bearing-mounted 360 degree rotate
Hoist Motor	Vane-type Air Motor	Vane-type Air Motor	Vane-type Air Motor	Vane-type Air Motor
Hoist Motor Brake	Optional Air-Operated	Optional Air-Operated	Optional Air-Operated	Optional Air-Operated
Load Brake	Weston type Roller Ratchet	Weston type Roller Ratchet	Weston type Roller Ratchet	Weston type Roller Ratchet
Hoist Control	Variable Speed	Variable Speed	Variable Speed	Variable Speed
Hoist Limit Switch	Upper block control circuit	Upper block control circuit	Upper block control circuit	Upper block control circuit
Rope Drum Diameter	7-1/2"	7-1/2"	7-1/2"	7-1/2"
Rope Drum Material	Cast Iron	Cast Iron	Cast Iron	Cast Iron
Sheave Diameter	5"	6" - Single Reeved 5" - Double Reeved	6"	6"
Sheave Material	Steel	Steel	Steel	Steel
Trolley Gearing	Worm	Worm	Worm	Worm
Trolley Motor	Vane-type Air Motor	Vane-type Air Motor	Vane-type Air Motor	Vane-type Air Motor
Trolley Control	Variable Speed	Variable Speed	Variable Speed	Variable Speed
Wheels	4"	4"	4" for 45' lift 6-1/2" for 30' lift	6-1/2"
Bumpers	Optional Rubber	Optional Rubber	Optional Rubber	Optional Rubber
Bearings	Anti-friction	Anti-friction	Anti-friction	Anti-friction

Air Motor Data: Hoist = 90 PSI @ 110-125 Scfm - 3/4" NPT air inlet

1 Ton

Industrial User Price List

AIR WIRE ROPE

Y80 - 800 Series

Standard Headroom Single Reeved

Catalog Number	Lift Ft.	Spd fpm	Mtr HP	No. Ropes Dia.	Headroom (inches)		Type Suspension							
							Lug Mounted		Push Trolley		Hand Geared Trolley		Motorized Trolley	
					Lug Mtd.	Trolley	Price	Wt.	Price	Wt.	Price	Wt.	Price	Wt.
†80††01-025S33-A	25	33	A	2-1/4	21-3/4	23	10421	215	11167	240	11508	270	13642	310
†80††01-050S33-A	50	33	A	2-1/4	21-3/4	22-9/16	10921	250	11830	305	12173	325	14530	415

Standard Headroom Double Reeved

†80††01-018D33-A	18	33	A	4-3/16	21-3/4	22-15/16	10676	230	11421	263	11767	280	13841	310
†80††01-034D33-A	34	33	A	4-3/16	21-3/4	22-15/16	11307	265	12109	325	12455	340	14684	430

† For a Y80 add a "Y" prefix.

†† To Complete catalog number: select type of hoist suspension by replacing †† in catalog number with L for Lug Mounting, P for Push Trolley, H for Hand Geared Trolley or M for Motor Driven Trolley.

Air Motor Data

Air Inlet Size - 3/4" NPT

Air Pressure - 90 p.s.i. at the hoist

Air Consumption - 110 - 125 scfm

Motor-Driven only Trolley Specifications

Hoist Lift (ft.)	Trolley						
	Speed (fpm)	Motor Size	Wheel Diameter	Minimum Radius	Beam Flange Width Range		
					Standard	1st Ext.	2nd Ext.
18	75	A	4"	4' - 0"	3' - 5"	5-1/8" - 7-1/4"	7-1/2" - 9-1/8"
25	75	A	4"	4' - 0"	3' - 5"	5-1/8" - 7-1/4"	7-1/2" - 9-1/8"
34	50	A	4"	4' - 0"	3' - 5"	5-1/8" - 7-1/4"	7-1/2" - 9-1/8"
50	60	A	4"	5' - 0"	3-5/8" - 6"	6-1/4" - 8-5/8"	8-7/8" - 11-1/4"

Trolley extension adders for wider beam flanges

1st Extension Add **\$61** for single lug, x2 for double lug.

2nd Extension Add **\$122** for single lug, x2 for double lug.

2 Ton

Industrial User Price List

AIR WIRE ROPE

Y80 - 800 Series

Standard Headroom Single Reeved

Catalog Number	Lift Ft.	Spd fpm	Mtr HP	No. Ropes Dia.	Headroom (inches)		Type Suspension							
							Lug Mounted		Push Trolley		Hand Geared Trolley		Motorized Trolley	
					Lug Mtd.	Trolley	Price	Wt.	Price	Wt.	Price	Wt.	Price	Wt.
†80††02-020S16-A	20	16	A	2-5/16	23-1/2	24-7/16	10464	220	11268	275	11607	300	13726	385
†80††02-040S16-A	40	16	A	2-5/16	23-1/2	24-7/16	11063	260	11870	315	12214	340	14489	425

Standard Headroom Double Reeved

†80††02-014D16-A	14	16	A	4-1/4	22-3/8	23-5/16	10707	235	11513	295	11853	320	13922	400
†80††02-025D16-A	25	16	A	4-1/4	22-3/8	23-5/16	11334	270	12137	330	12483	345	14639	435

† For a Y80 add a "Y" prefix.

†† To Complete catalog number: select type of hoist suspension by replacing †† in catalog number with L for Lug Mounting, P for Push Trolley, H for Hand Geared Trolley or M for Motor Driven Trolley.

Air Motor Data

Air Inlet Size - 3/4" NPT

Air Pressure - 90 p.s.i. at the hoist

Air Consumption - 110 - 125 scfm

Motor-Driven only Trolley Specifications

Hoist Lift (ft.)	Trolley						
	Speed (fpm)	Motor Size	Wheel Diameter	Minimum Radius	Beam Flange Width Range		
					Standard	1st Ext.	2nd Ext.
14	75	A	4"	5' - 0"	3-5/8" - 6"	6-1/4" - 8-5/8"	8-7/8" - 11-1/4"
20	60	A	4"	5' - 0"	3-5/8" - 6"	6-1/4" - 8-5/8"	8-7/8" - 11-1/4"
25	75	A	4"	5' - 0"	3-5/8" - 6"	6-1/4" - 8-5/8"	8-7/8" - 11-1/4"
40	60	A	4"	5' - 0"	3-5/8" - 6"	6-1/4" - 8-5/8"	8-7/8" - 11-1/4"

Trolley extension adders for wider beam flanges

1st Extension Add **\$61** for single lug, x2 for double lug.

2nd Extension Add **\$122** for single lug, x2 for double lug.

<h1>3 Ton</h1>	<h2>Industrial User Price List</h2>	<h2>AIR WIRE ROPE</h2>	<h2>Y80 - 800 Series</h2>
----------------	---	------------------------	---------------------------

Standard Headroom Single Reeved

Catalog Number	Lift Ft.	Spd fpm	Mtr HP	No. Ropes Dia.	Headroom (inches)		Type Suspension							
							Lug Mounted		Push Trolley		Hand Geared Trolley		Motorized Trolley	
					Lug Mtd.	Trolley	Price	Wt.	Price	Wt.	Price	Wt.	Price	Wt.
†80††03-030S11-A	30	11	A	4-5/16	26	27-3/16	11104	340	12471	490	13077	560	14524	635
†80††03-045S11-A	45	11	A	4-5/16	26-7/8	28-1/16	12879	425	14244	705	14849	790	16301	755

† For a Y80 add a "Y" prefix.

†† To Complete catalog number: select type of hoist suspension by replacing †† in catalog number with L for Lug Mounting, P for Push Trolley, H for Hand Geared Trolley or M for Motor Driven Trolley.

Air Motor Data

Air Inlet Size - 3/4" NPT

Air Pressure - 90 p.s.i. at the hoist

Air Consumption - 110 - 125 scfm

Motor-Driven only Trolley Specifications

Hoist Lift (ft.)	Trolley						
	Speed (fpm)	Motor Size	Wheel Diameter	Minimum Radius	Beam Flange Width Range		
					Standard	1st Ext.	2nd Ext.
30	50	A	6-1/2"	7' - 0"	4" - 6-1/4"	6-3/8" - 8-5/8"	8-3/4" - 11"
45*	50	A	4"	**	4" - 6-1/4"	6-3/8" - 8-5/8"	8-3/4" - 11"

Trolley extension adders for wider beam flanges

1st Extension Add **\$61** for single lug, x2 for double lug.

2nd Extension Add **\$122** for single lug, x2 for double lug.

*Double Lug Model

** Straight Track only

5 Ton

Industrial User Price List

AIR WIRE ROPE

Y80 - 800 Series

Standard Headroom Single Reeved

Catalog Number	Lift Ft.	Spd fpm	Mtr HP	No. Ropes Dia.	Headroom (inches)		Type Suspension							
							Lug Mounted		Push Trolley		Hand Geared Trolley		Motorized Trolley	
					Lug Mtd.	Trolley	Price	Wt.	Price	Wt.	Price	Wt.	Price	Wt.
†80††05-020S07-A	20	7	A	6-5/16	27-3/4	29-1/16	12231	360	13600	510	14202	580	15573	655
*†80††05-030S07-A	30	7	A	6-5/16	29-1/2	30-15/16	14005	520	15377	800	15976	885	17343	850

† For a Y80 add a "Y" prefix.

†† To Complete catalog number: select type of hoist suspension by replacing †† in catalog number with L for Lug Mounting, P for Push Trolley, H for Hand Geared Trolley or M for Motor Driven Trolley.

Air Motor Data

Air Inlet Size - 3/4" NPT

Air Pressure - 90 p.s.i. at the hoist

Air Consumption - 110 - 125 scfm

Motor-Driven only Trolley Specifications

Hoist Lift (ft.)	Trolley						
	Speed (fpm)	Motor Size	Wheel Diameter	Minimum Radius	Beam Flange Width Range		
					Standard	1st Ext.	2nd Ext.
20	50	A	6-1/2"	7' - 0"	4" - 6-1/4"	6-3/8" - 8-5/8"	8-3/4" - 11"
30*	50	A	6-1/2"	**	4" - 6-1/4"	6-3/8" - 8-5/8"	8-3/4" - 11"

Trolley extension adders for wider beam flanges
 1st Extension Add \$61 for single lug, x2 for double lug.
 2nd Extension Add \$122 for single lug, x2 for double lug.

*Double Lug Model

** Straight Track only

Electric Hoist Options

Air Hoist Options

Electrical Options

Subject	Page No.
Collectors	15
Control Deducts	15
Control Enclosures	15
Control Transformer	15
Electronic Acceleration Control	15
Festoon Pickup Arm	15
Fuse Panel	15
High Temperature Wiring	15
Inching Control	15
Limit Switches	15
Mainline Panel	15
Explosion Proof Control/Spark Resistant	16
Motor Protection	17
NEMA Rated Contactors	17
Over Capacity Lift Protection	17
Pushbutton Modifications	17
Reconnectable Panels	17
Special Voltages	17
Strip Heaters	17
Trolley Traverse Brake	17
Trolley (two speed)	17
Warning Devices	17
Variable Frequency Control	18

Mechanical Options

Stainless Steel Wire Rope	16
Spark Resistant Hooks, Lower Block, Wheels	16
Base Mounted Hoists	19
Bumpers	19
Drip Pans	19
Trolley Hand Chain	19
Zinc Plated Hand Chain	19
Heat Shield	19
Bullard Hook Latches	19
Magnetic Particle Testing	19
Special Paint	19
Patented Track Wheels	19
Rope Guide	19
Drop Lugs	19
Stainless Steel ID Tag	19
Steel Rope Drum Add	19
Optional Trolley Traverse Speeds	20
Add for Heavy Duty Steel Wheel Trolleys	20
For Trolley Operation on Wide Flange Beams	21
Recommended Hoist Motion Only Spare Parts	21

Subject

Page No.

Filter/Lubrication	22
Gear Limit Switch	22
Motor Brake	22
Pendant Throttle	22

Single & Double Reeved

Industrial User Price List

ELECTRIC HOIST OPTIONS

Y80 - 800 Series

COLLECTORS (For trolley Mounting — Shipped Loose)

Catalog	Description	Qty	List
931077	30 amp Short Arm	3	159
931078	30 amp Long Arm	3	218
931077	30 amp Short Arm	4	212
931078	30 amp Long Arm	4	289

901590 Collector Pole & Bracket.....67

CONTROL DEDUCTS

Omits: Contactors, transformer & pushbutton
Leaves: Brake and brake control module.

Hoist

1-4 hp (single speed)..... deduct.....-(167)
 1-4 hp (two speed) deduct.....-(192)

Trolley

Single speed..... deduct.....-(99)

CONTROL ENCLOSURES

Weather resistant

Hoist only 133
 Hoist & motor driven trolley.....300

NEMA Type 4 /12 (includes modification of standard block limit switch)

Single speed hoist or
 Single speed hoist with motor driven trolley 1147
 Two speed hoist with single or
 Two speed motor driven trolley 1328

NEMA Type 4X Fiberglass Enclosure*

Single speed hoist or
 Single speed hoist with motor driven trolley 1641
 Two speed hoist with single or
 Two speed motor driven trolley 1976

* For stainless steel add \$1181 to the 4X prices

NEMA Type 7 or 9 See hazardous price location

CONTROL TRANSFORMER-100 VA230 (in lieu of standard 50 VA)

24 Volt control292

ELECTRONIC ACCELERATION CONTROL (E.A.C.)

Electronic Soft Start for Trolley Traverse: (Ratings are Total HP)

Voltage	Max HP	1 Speed	2 Speed
230	3/4	188	188
230	2	188	188
460	2	188	188
575	10	717	717

FESTOON PICKUP ARM

18" long square tube tow bar on mounting plate.....203

FUSE PANEL (Required for OSHA compliance)

Motorized "hoist or trolley only"347
 Motorized hoist & motorized trolley402

HIGH TEMPERATURE WIRING

Standard wiring is good to 90°C. For applications requiring a higher temperature rating, contact factory.

INCHING CONTROL - (Hoist or Trolley motion, single or two speed)

Includes timers plus an extra pair of pushbuttons per motion for preset run time from .6 to 6 seconds.....435

LIMIT SWITCHES

Hoist (adds to base hoist price)

Geared type upper and lower (control circuit)
 2 element NEMA 4/12 (adds 3" to headroom)471
 4 element (add 3" headroom).....908
 Power Contactor (NEMA 4) 1463

Power Circuit (adds 14" to headroom)

NEMA 15799
 NEMA 4/126175
Power Contactor Type (NEMA 4))..... 1463

Trolley

Trolley travel type (NEMA 4/12) 1409

MAINLINE PANEL - (Includes stop-start buttons in push button station and hoist and/or trolley motor fusing)

Magnetic disconnect, trolley mounted.....948

Single & Double Reeved

Industrial User Price List

ELECTRIC HOIST OPTIONS

Y80 - 800 Series

Explosion Proof Control/Spark Resistant

Hoist Motion Only Electrical Explosion Proof Adders*

prices are to be added to the base price of a single or two speed hoist for 230 or 460/3/60 applications

HAZARDOUS LOCATION CONTROLS

For CSA and Variable Frequency Applications - Contact factory Group E is not available.

TROLLEY BRAKE FOR HAZARDOUS LOCATION

Division 1 (in lieu of standard adder) 1316
Division 2 Uses standard brake..... 488

HOIST MOTORS AND ENCLOSURES - Includes hoist motor, control panel enclosure, block limit switch and interconnecting wiring.

Add to the base price of a single or two speed hoist for 230/460-3-60 applications.

INTRINSICALLY SAFE PUSHBUTTON STATION

Prices are in addition to the Hoist/Trolley, Motor/Control adds. Base hoist must have all required standard pushbuttons priced in.

Add per pair of buttons 1 speed control..... 623
2 speed control..... 1238

Division 1				
Hoist HP	Class I Group C & D (Includes Motor TAS)		Class II Group F & G (Includes Motor TAS)	
	1 Speed	2 Speed	1 Speed	2 Speed
1	10266	N/A	10436	N/A
2	10542	N/A	10553	N/A
3 & 4	N/A	N/A	N/A	N/A
Division 2				
Hoist HP	Class I Group B, C & D** (Includes TOLR)		Class II Group F & G (Includes Motor TAS)	
	1 Speed	2 Speed	1 Speed	2 Speed
1 - 4	7621	8727	1147	1326

**For class I, Division 2, Group B add \$1063 to these prices. For hoists without pendants.

SPARK RESISTANT FEATURES*

Lower Block and Hook

For 1/2 to 2 ton only. Aluminum lower block sides, spark-resistant. Bronze frame, solid bronze hook with stainless steel hook latch.

1/2, 1 & 2 ton, 2 or 4 pts. rope 537

For 3 & 5 ton - Copper plated lower block frame and hook with bronze end caps on the sheave pin protrusions and stainless steel hook latch.

3 ton, 4 pts. rope 1968
5 ton, 6 pts. rope 2057

For 3 & 5 ton - Solid bronze lower block frame with bronze sheave pin caps and bronze hook with stainless steel hook latch.

3 ton, 4 pts. rope 4373
5 ton, 6 pts. rope 5294

Spark Resistant Trolley Bronze Wheels (price each)

4" wheel diameter 585
6 1/2" wheel diameter 632

SPARK RESISTANT ROPE (Stainless Steel)

TROLLEY MOTORS AND ENCLOSURES - Includes trolley motor and interconnecting wiring.

Not applicable for Trolley Only pricing - based on purchase with hoist. Add to the base price of a single or two speed trolley with hoist.

Division 1				
HP	Class I Group D (Includes Motor TAS)		Class II Group F & G (Includes Motor TAS)	
	1 Speed	2 Speed	1 Speed	2 Speed
1/4	1482	2552	1798	N/A
1/2	1551	2801	1841	N/A
Division 2				
HP	Class I Group B, C & D (Includes TOLR)		Class II Group F & G (Includes Motor TAS)	
	1 Speed	2 Speed	1 Speed	2 Speed
1/4 - 1/2	1147	1147	*	*

*NEMA 4/12 control box modification covered by hoist control adder.

Single Reeved 800 Series Hoists			
Capacity (tons)	Lift	Number Ropes/Dia.	Price per hoist
1/2 & 1	25	2-1/4"	129
	50		257
2	Consult Factory		
3	30	4-5/16"	307
	45		460
5	20	6-5/16"	333
	30		499
Double Reeved TVL 800 Series Hoists			
1/2 & 1	18	4-3/16"	48
	34		88
	47		122
2	14	4-1/4"	144
	25		255
	36		368

BUMPERS (Trolley)

SR Drop Lugs with Bumpers 1033

HAND CHAIN

Zinc Plated (Total length - per foot of drop) 7.43
Aluminum 11.16

Single & Double Reeved	Industrial User Price List	ELECTRIC HOIST OPTIONS	Y80 - 800 Series
---------------------------------------	---------------------------------------	-----------------------------------	-------------------------

MOTOR PROTECTION - Thermal Protection: (per motion)
Thermostat Type in Motor Winding, single or two speed control..... Std

Thermal Overload Relays:
For I.E.C. (standard) Contactor Control
Single speed control..... 132
Two speed control 194

For NEMA Contactor Control
Single speed control..... 197
Two speed control 292

**NEMA RATED CONTACTORS
(includes addition of NEMA 4/12 panel enclosure)**
1-4 hp (single speed) 1946
1-4 hp (two speed)..... 2405

Trolley
Single speed 1931
Two speed 2405

**OVER CAPACITY LIFT PROTECTION
Single reeved only (adds 10" to headroom)**
Electronic Dillon (NEMA 1)..... 2418
Electronic Dillon (NEMA 4 or 12)..... 3348

Weight Watcher Overload
Built-in mechanical overload device factory installed 435

**PUSH BUTTON MODIFICATIONS
(IP65-equivalent to NEMA 4)
Additional buttons (per pair of buttons)**
Stop-start..... 108
Single speed 50
Two speed 50

Deduct for omitting push button assembly
Single speed hoist deduct-(77)
Two speed hoist..... deduct-(90)
Single speed hoist/single speed trolley deduct-(106)
Two speed hoist/single or two speed trolley deduct-(137)

Selector switch
3 position hoist only 530
3 position hoist with motorized trolley 798

Red Mushroom Stop Button (maintained) 242

Red Pilot Light 209

On-Off Key Lock (with one key) 209

Additional push button cable (per ft.) 3

Push button outrigger (3' non-swivel type) 480

RECONNECTABLE PANELS - (For single speed panels only that can be reconnected from 230 to 460 volts)

Add per single speed panel 251
Effective 12/15/94 all single speed hoists will be wired specifically for 230 or 460 volt power. Reconnectable single speed hoist control for 230/460 volt can be provided for the above charge if specified.

**SPECIAL VOLTAGES (Add each motor)
(Contact factory for other voltages)**
190/3/50 hertz or 380/3/50 hertz (reduces speeds and HP by 1/6)
1/2-5 hp 159
208/3/60 hertz or 575/3/60 hertz..... N/C

**STRIP HEATERS - (120 volt,
wattage depends on motor/panel size)**
In control panel with thermostat (per panel) 541
In motor w/o thermostat (per motor) 192
In Push button station w/o thermostat 328

TROLLEY TRAVERSE BRAKE - (A.C. Disc Type)
Single motor trolley 488

WARNING DEVICES - Specify mode of activation and by which motion if automatic.
Horn 384
Red Flashing Light..... 643

Note: CSA Approvals - Some options are required for CSA Approvals - Consult factory for details.

Single & Double Reeved

Industrial User Price List

ELECTRIC HOIST OPTIONS

Y80 - 800 Series

Variable Frequency Control

For Y80 and 800 Series Monorail Hoists with Mechanical Load Brakes and Monorail Trolleys

VARIABLE FREQUENCY CONTROL - 2-STEP INFINITELY VARIABLE

Prices are to be added to the base hoist/trolley price with single speed control. The standard control is programmed for 2-step, infinitely variable on the second step. Price adds include; wiring, panel modifications, deletion of the standard control and modifications of the motion's pushbuttons for 2-step control. **These are add prices, not stand alone panel prices. Do not deduct for the standard controls.**

Note: Three step control is available by specifying on the order and pricing out the add for 3-step pendant buttons. For explosion proof applications contact factory.

Using the Electromotive P3 Drive

Control Combination	Maximum Hoist HP	Maximum Trolley HP	Inverter Size	List Price Adds	
				230 volts	460 volts
Hoist Only	1	N/A	G+ Mini	1138	1369
	2			1346	1369
	4			1887	1970
Trolley Only	N/A	0.5		1013	1122
Hoist & Trolley	1	1		2148	2492
	2			2358	2492
	4		2903	2673	

575 Volt G+ for in a NEMA 4/12 Enclosure

For hoist or trolley motion (price per motion)

To 2 hp	5085
To 3 hp	5158
To 4 hp	5867

Standard Features:

- 2-Step infinitely variable
- Trolley only control mounted in the trolley panel
- Hoist only control or hoist & trolley combination mounted under an extended hoist control panel cover which adds 3-1/16" to the hoist's length
- NEMA 1 enclosure as standard
- Dynamic Braking Resistor
- Set at 10 HZ low and 60 HZ high
- Fusing
- Rated for H4 Hoist or Trolley Service

Single & Double Reeved

Industrial User Price List

ELECTRIC HOIST OPTIONS

Y80 - 800 Series

BASE MOUNTED HOISTS

Adds four mounting feet to a lug-mounted hoist.
The lug stays in place and **the pushbutton station is deleted.**
Mounting feet are 4" tall. Add289

BUMPERS (Trolley)

Rubber Bumpers - Includes Drop Lugs645

DRIP PANS - (mounted under hoist and/or trolley gear cases)

Hoist only586
Hoist with one motor driven trolley838

TROLLEY HAND CHAIN - (standard finish)

Additional length-per foot of drop4.00

HAND CHAIN

Zinc Plated (Total length - per foot of drop)7.43
Aluminum11.16

HEAT SHIELD

For the Hoist & Trolley.
Mounted under the full length of the hoist963
For lower block only463

BULLARD HOOK LATCHES - Standard is spring loaded steel

Bullard Hook latch (increase headroom and delivery lead time.)
(Contact factory for details)
1/2-5 ton477

MAGNETIC PARTICLE TESTING - Testing of hook forging prior to machining. Test report furnished

1/2 - 5 tons capacity328

SPECIAL PAINT

	Topcoat	Primer	Price
Solvent Based	Omaha Orange S-W #F75EC2	Shopcoat Primer S-W #E61AC82, Gray	776
Water Based	*Blue S-W Kem Aqua 280 #3015C	**Blue S-W Kem Aqua 70P #3015C	Std on 800
	**Yellow S-W Kem Aqua 280 #109C	**Yellow S-W Kem Aqua 70P #123C	Std on Y80
	CM Orange S-W Kem Aqua 280 #F78E502	Yellow S-W Kem Aqua 70P #123C	162
	Navy Gray	T.B.D.	Consult Factory

WATER BASED EPOXY PRIMER & FINISH

(indoor applications) Yellow or Blue Add:
1/2 - 3 ton840
5 ton889

SOLVENT BASED EPOXY PRIMER & FINISH

(outdoor applications)
Yellow or White Add1494

Note: For paint specifications - Consult factory

PATENTED TRACK WHEELS 3/4" FLANGE ONLY (price per trolley)

Push & hand geared trolley
1/2 - 2 ton - 4" diameter203
3 - 5 ton - 6 1/2" diameter203

Motor driven trolleys

1/2 - 2 ton - 4" diameter203
3 - 5 ton - 6 1/2" diameter203

ROPE GUIDE - (For Single Reeved Hoists only.)

Includes installation and geared upper and lower limit switch637
Will effect amount of lift & headroom dimensions - contact factory.

DROP LUGS (per each 4-wheel trolley)328

STAINLESS STEEL ID TAG85
Size to be 2" x 4" max. - Specify mounting location desired.

SPARK RESISTANT FEATURES - See page 16

STEEL ROPE DRUM ADD

1/2 & 1 Ton 25'-0" Lift or 18' TVL954
2 Ton 20'-0" Lift or 14' TVL954
1/2 & 1 Ton 50'-0" Lift or 34' & 47' TVL1311
2 Ton 40'-0" Lift or 25' & 36' TVL1311
3 Ton 30'-0" Lift1311
5 Ton 20'-0" Lift1311
3 Ton 45'-0" Lift1849
5 Ton 30'-0" Lift1849

**Single &
Double Reeved**

**Industrial User
Price List**

**ELECTRIC HOIST
OPTIONS**

Y80 - 800 Series

Optional Trolley Traverse Speeds

Single Reeved or True Vertical Lift

Wheel Diameter (in)	Standard Cataloged Speed (fpm)	Optional Speeds (fpm)	Add Price
4	50	25* 75	147 NC
4	60	30* 40 80	147 NC NC
4†	75	25* 50 100	147 NC NC
6½	50	25* 80	356 NC

† For the following Y80 and 800 series hoists;
1/2 and 1 ton single reeved @ 25' lift
1/2 and 1 ton true vertical lift @ 18' lift

* These speeds are not available in 2-speed or variable frequency control

**ADD FOR HEAVY DUTY
STEEL WHEEL TROLLEYS**
For single lug hoist. Multiply x2
for double lug.

Push Type

½ & 1 ton, 25' lift; 18' TVL..... 550
½ & 1 ton, 50' lift; 34' & 47' TVL — 2 ton, 20', 40' lift; 458

Hand Geared

½ & 1 ton, 25' lift; 18' TVL..... 1129
½ & 1 ton, 50' lift; 34' & 47' TVL — 2 ton, 20', 40' lift; 14', 25' & 36' TVL 1238

Single & Double Reeved	Industrial User Price List	ELECTRIC HOIST OPTIONS	Y80 - 800 Series
-----------------------------------	-----------------------------------	-------------------------------	-------------------------

FOR TROLLEY OPERATION ON:

Thicker Beam Flange (price per trolley)

4" & 6½" Diameter Wheel Trolleys (will add approximately 1" to headroom)
 To a maximum thickness of 1½"
 Add to standard, first or second
 extension pricing one trolley (lug) 575
 extension pricing two trolleys (lugs) (covers 2 trolleys) 885

Wider Beams

4" & 6½" Diameter Wheel Trolleys (will add approximately 4½-5" to headroom)
 To a maximum thickness of 1½"
 Add to base hoist & trolley pricing

One Trolley

11 1/8" to 15" 1143
 15 1/8" to 18 1/8" 1328
 18 1/2" to 22" 1511

Two Trolley (covers 2 trolleys)

11 1/8" to 15" 1725
 15 1/8" to 18 1/8" 2094
 18 1/2" to 22" 2493

Recommended Hoist Motion Only Spare Parts

Listed below are recommended spare parts packages by hoist type. These prices are based on standard cataloged hoists and the **packages being purchased with and for new hoists before they ship**. Prices **do not** cover stainless steel rope, spark-proof, explosion proof or special options beyond the base cataloged hoist features

Standard, cataloged Y80 and 800 Series Spare Parts Package 713
 Includes; load and motor brake discs, gear case gasket, brake coil, transformer, reversing contactor and wire rope.

Single & Double Reeved	Industrial User Price List	AIR HOIST OPTIONS	Y80 - 800 Series
-----------------------------------	-----------------------------------	--------------------------	-------------------------

--	--	--

FEATURE	DESCRIPTION	PRICE
FILTER/LUBRICATOR	3/4" NPT for motor size A	474
AIR GEARED UPPER & LOWER LIMIT SWITCH	1022
MOTOR BRAKE - AIR OPERATED	For A hoist motor	1866
	For Trolley Traverse	1866
PENDANT THROTTLE	Two Thumb levers per powered motion purchased.....	Included
	For additional two Thumb levers.....	397

Single & Double Reeved	Industrial User Price List	ELECTRIC HOIST OPTIONS	Y80 - 800 Series
-----------------------------------	-----------------------------------	-------------------------------	-------------------------

EXPLOSION PROOF CONTROL

Options for Hazardous Environments

Y80 and 800 Series Hoist and Trolleys can be provided to operate in most hazardous environments. Following in this electrical options section are price adds for motors, brakes, limit switches, pendant stations and control enclosures required to operate in hazardous environments.

Before pricing out the required options you must know the Class, Group and Division of Hazardous environment, as defined by the National Electrical Code. Below are definitions and example sheets to aid in the determination of the environment the hoist will operate in.

Definitions

Class

Class I	Locations: Are those in which flammable gases or vapors are or may be present in the air in quantities sufficient to produce explosive or ignitable mixtures.
Class II	Locations: Are those which are hazardous due to the presence of combustible dust.
Class III	Locations: Are those which are hazardous due to the presence of easily ignitable fibers or flyings, but in which such fibers or flyings are not likely to be in suspension in the air in quantities to produce ignitable mixtures.

Division

Division I	Locations in which hazardous concentrations in the air exist continuously, intermittently, or periodically under normal operating conditions.
Division II	Locations in which hazardous concentrations are handled, processed, or used but are normally within closed containers or closed systems from which they can escape only in case of accidental rupture or breakdown.

Group

CLASS I	Group A Atmospheres containing acetylene. (not available on Shaw-Box products)
	Group B Atmospheres containing hydrogen, or gases or vapors of equivalent hazard, such as manufactured gas. (not available in Division 1 design)
	Group C Atmospheres containing ethyl-ether vapors, ethylene or cyclo propane.
	Group D Atmospheres containing gasoline, hexane, naphtha, benzene, butane, alcohol, acetone, benzol, lacquer solvent vapors, or natural gas.
CLASS II	Group E Atmospheres containing metal dust, including aluminum, magnesium and their commercial alloys and other metals of similarly hazardous characteristics.
	Group F Atmospheres containing carbon black, coal or coke dust.
	Group G Atmospheres containing flour, starch, or grain dust.

Single & Double Reeved

Industrial User Price List

ELECTRIC HOIST OPTIONS

Y80 - 800 Series

EXPLOSION PROOF CONTROL

Options for Hazardous Environments

Below is a chart detailing the motors, enclosures and electrical modifications provided by the price adders in this section for the various classes, groups and divisions of hazardous environments the Y80 and 800 series are available for.

Hazardous Locations

Electrical Standards*

Hazardous Location Equipment	Class I Group C & D	Class I Group B, C & D	Class II, Div. 1 Group E, F & G	Class II, Div 2 Group F & G
	Division 1	Division 2		
Motors	“Explosion-Proof” approved for Class I, Group C or D (as applicable) With TAS	TENV or TEFC squirrel cage only No TAS	“Dust-Ignition-Proof”, approved for Class II With TAS	TENV or TEFC dust-tight, squirrel cage, B insulation rise With TAS
Brakes	Approved for Class I, Group C or D (as applicable)	Enclosed Std. disc type	Approved for Class II & applicable group	Enclosed dust-tight disc type
Control Enclosure	NEMA type 7	NEMA type 7	NEMA type 9	NEMA type 4/12
Limit Switch Enclosures	NEMA type 7 or ISR	NEMA type 7 or ISR	NEMA type 9 or ISR	NEMA type 4/12
PB Station Enclosures	NEMA type 7 or ISR	NEMA type 7 or ISR	NEMA type 9 or ISR	NEMA type 4/12
Main Disconnect Device	Circuit breaker only in NEMA type 7 enclosure	Circuit breaker only in NEMA type 7 enclosure	Circuit breaker only in NEMA type 9 enclosure	Circuit breaker or fusible switch in NEMA type 4/12 enclosure
Runway & Cross Conductors	Cable Reel	Cable Reel	Cable Reel	Cable Reel

***NOTE: The National Electric Code does not refer to Spark Resistant features. These must be user specified.**

Standard Features

Industrial User Price List

ELECTRIC WIRE ROPE

Shaw-Box Size 2

Single & Double Reeved Electric Hoists with Motor Driven Trolleys

Feature	1 Ton	3 Ton	5 Ton	7½ Ton	10 Ton
Service Class	H-4	H-4	H-4	H-4	H-4
Reeved - Single	N/A	4 PS - 3/8"	4 PS - 3/8"	4 PS - 7/16"	6 PS - 7/16"
Reeved - Double	4 PD - 3/16"	4 PD - 5/16"	6 PD - 5/16"	8 PD - 5/16"	N/A
Hoist Gearing	Double Reduction Helical Gearing	Double Reduction Helical Gearing	Double Reduction Helical Gearing	Double Reduction Helical Gearing	Double Reduction Helical Gearing
Hook Assembly	Bearing-mounted 360 degree rotate	Bearing-mounted 360 degree rotate	Bearing-mounted 360 degree rotate	Bearing-mounted 360 degree rotate	Bearing-mounted 360 degree rotate
Hoist Motor	30-minute rated TENV	30-minute rated TENV	30-minute rated TENV	30-minute rated TENV	30-minute rated TENV
Hoist Motor Brake	150% nominal torque, DC disc	150% nominal torque, DC disc	150% nominal torque, DC disc	150% nominal torque, DC disc	150% nominal torque, DC disc
Load Brake	Weston type	Weston type	Weston type	Weston type	Weston type
Hoist Control	1-speed	1-speed	1-speed	1-speed	1-speed
Control Circuit voltage	115 Volts	115 Volts	115 Volts	115 Volts	115 Volts
Hoist Limit Switch	Upper block control circuit	Upper block control circuit	Upper block control circuit	Upper block control circuit	Upper block control circuit
Rope Drum Diameter	9"	9"	9"	9"	9"
Rope Drum Material *	Cast Iron	Cast Iron	Cast Iron	Cast Iron	Steel
Sheave Diameter	9" on S.R. 6" on T.V.L	9" on S.R. 6" on T.V.L	9" on S.R. 6" on T.V.L	9" on S.R. 6" on T.V.L	9" on S.R.
Sheave Material	Cast Iron	Cast Iron	Cast Iron	Cast Iron	Cast Iron
Trolley Gearing	Worm	Worm	Worm	Worm	Worm
Trolley Motor	30-minute rated TENV	30-minute rated TENV	30-minute rated TENV	30-minute rated TENV	30-minute rated TENV
Trolley Brake	Optional AC Disc	Optional AC Disc	Optional AC Disc	Optional AC Disc	Optional AC Disc
Trolley Control	1-speed	1-speed	1-speed	1-speed	1-speed
Wheels	6-1/2"	6-1/2"	6-1/2"	6-1/2"	6-1/2"
Bumpers	Optional Rubber	Optional Rubber	Optional Rubber	Optional Rubber	Optional Rubber
Bearings	Anti-friction	Anti-friction	Anti-friction	Anti-friction	Anti-friction
Motor TAS	Standard	Standard	Standard	Standard	Standard
Control Enclosure	NEMA 1	NEMA 1	NEMA 1	NEMA 1	NEMA 1

*Steel on Double Lug models only

3, 5, 7 & 10 Ton	Industrial User Price List	ELECTRIC WIRE ROPE	Shaw-Box Size 2
---------------------------------	---------------------------------------	---------------------------	----------------------------

Standard Headroom Single Reeved

3 Ton

Catalog Number	Lift Ft.	Spd fpm	Mtr HP	No. Ropes/Dia.	Headroom (inches)		Type Suspension								Hoist 2 Speed Adder
							Lug Mounted		Push Trolley		Hand Geared Trolley		Motorized Trolley		
					Lug Mtd.	Trolley	Price	Wt.	Price	Wt.	Price	Wt.	Price	Wt.	
72†03-026S15-††	26	15	3	4-3/8	36-5/8	38	9108	845	10293	985	10707	1010	11456	1035	1248
72†03-026S20-††	26	20	5	4-3/8	36-5/8	38	9936	860	11122	1000	11535	1025	12420	1050	1248

5 Ton

Catalog Number	Lift Ft.	Spd fpm	Mtr HP	No. Ropes/Dia.	Headroom (inches)		Type Suspension								Hoist 2 Speed Adder
							Lug Mounted		Push Trolley		Hand Geared Trolley		Motorized Trolley		
					Lug Mtd.	Trolley	Price	Wt.	Price	Wt.	Price	Wt.	Price	Wt.	
72†05-026S15-††	26	15	5	4-3/8	36-5/8	37-7/8	9394	860	10601	1000	11022	1085	11636	1050	1248
72†05-026S20-††	26	20	7.5	4-3/8	36-5/8	37-7/8	10211	910	11400	1050	11814	1135	12420	1100	1671
72†05-047S15-††	47	15	5	4-3/8	36-5/8	38	14074	1175	16446	1540	16862	1600	18161	1635	1248
72†05-047S20-††	47	20	7.5	4-3/8	36-5/8	38	15041	1225	17413	1590	17830	1650	19127	1685	1671

7½ Ton

Catalog Number	Lift Ft.	Spd fpm	Mtr HP	No. Ropes/Dia.	Headroom (inches)		Type Suspension								Hoist 2 Speed Adder
							Lug Mounted		Push Trolley		Hand Geared Trolley		Motorized Trolley		
					Lug Mtd.	Trolley	Price	Wt.	Price	Wt.	Price	Wt.	Price	Wt.	
72†07-022S14-††	22	14	7.5	4-7/16	36-7/8	38	12706	910	13916	1050	14331	1135	15069	1100	1671
72†07-038S14-††	38	14	7.5	4-7/16	36-5/8	38	15223	1225	17591	1590	18005	1650	19304	1690	1671

10 Ton

Catalog Number	Lift Ft.	Spd fpm	Mtr HP	No. Ropes/Dia.	Headroom (inches)		Type Suspension								Hoist 2 Speed Adder
							Lug Mounted		Push Trolley		Hand Geared Trolley		Motorized Trolley		
					Lug Mtd.	Trolley	Price	Wt.	Price	Wt.	Price	Wt.	Price	Wt.	
72†10-025S14-††	25	14	10	6-7/16	39-7/8	41-7/8	14579	1325	16991	1690	17409	1750	19851	1785	1671

† To complete catalog number: select type of hoist suspension by replacing †† in catalog number with L for Lug Mounting, P for Push Trolley, H for Hand Geared Trolley or M for Motor Driven Trolley.

††Select required speed points by replacing † in catalog number with 1 or 2 to the base catalog number. Hoist adder for 2 speed is for 3:1 ratio control (except where noted *2:1) and is to be added to the single base price.

Motor-Driven only Trolley Specifications

Hoist Lift (ft.)	Trolley								
	Speed (fpm)	H.P.	Wheel Diameter	Minimum Radius	Beam Flange Width Range			2-Speed Add (3:1)	460 Volt VFC Add
					Standard	1st Ext.	2nd Ext.		
22, 26	50	1/2	6-1/2"	7' - 0'	4" - 6-1/4"	6-3/8" - 8-5/8'	8-3/4" - 11"	497	1122
25*, 38* & 47*	50	(2) 1/4	6-1/2"	**	4" - 6-1/4"	6-3/8" - 8-5/8'	8-3/4" - 11"	497	1122

Trolley extension adders for wider beam flanges
 1st Extension Add **\$61** for single lug, x2 for double lug.
 2nd Extension Add **\$122** for single lug, x2 for double lug.
 *Double Lug Model
 ** Straight Track only.

1 & 3 Ton

Industrial User Price List

ELECTRIC WIRE ROPE

Shaw-Box Size 2

Standard Headroom Double Reeved

1 Ton

Catalog Number	Lift Ft.	Spd fpm	Mtr HP	No. Ropes/Dia.	Headroom (inches)		Type Suspension								Hoist 2 Speed Adder
							Lug Mounted		Push Trolley		Hand Geared Trolley		Motorized Trolley		
							Price	Wt.	Price	Wt.	Price	Wt.	Price	Wt.	
72†01-083D30-††	83	30	3	4-3/16	23-1/4	27-3/4	14903	1150	17274	1430	17688	1520	20093	1530	1248
72†01-083D40-††	83	40	3	4-3/16	23-1/4	27-3/4	14903	1175	17274	1455	17688	1545	20093	1555	1248
72†01-083D60-††	83	60	5	4-3/16	23-1/4	27-3/4	15705	1230	18076	1530	18491	1620	20895	1630	1248

3 Ton

Catalog Number	Lift Ft.	Spd fpm	Mtr HP	No. Ropes/Dia.	Headroom (inches)		Type Suspension								Hoist 2 Speed Adder
							Lug Mounted		Push Trolley		Hand Geared Trolley		Motorized Trolley		
							Price	Wt.	Price	Wt.	Price	Wt.	Price	Wt.	
72†03-027D19-††	27	19	5	4-5/16	28-1/4	29-5/8	10211	840	11399	980	11811	1005	13108	1030	1248
72†03-027D30-††	27	30	7.5	4-5/16	31-1/4	32-5/8	11175	840	12361	980	12774	1005	14072	1030	1671
72†03-027D40-††	27	40	10	4-5/16	31-1/4	32-5/8	11647	840	12831	980	13247	1005	14541	1030	1671
72†03-050D19-††	50	19	5	4-5/16	31-1/4	32-5/8	11605	1225	13978	1505	14391	1595	16791	1605	1248
72†03-050D30-††	50	30	7.5	4-5/16	31-1/4	32-5/8	12570	1225	14943	1505	15357	1595	17756	1605	1671
72†03-050D40-††	50	40	10	4-5/16	31-1/4	32-5/8	13042	1225	15412	1505	15826	1595	18226	1605	1671

* Weight of single speed hoist

Motor-Driven only Trolley Specifications

Hoist Lift (ft.)	Trolley								
	Speed (fpm)	H.P.	Wheel Diameter	Minimum Radius	Beam Flange Width Range			2-Speed Add (3:1)	460 Volt VFC Add
					Standard	1st Ext.	2nd Ext.		
27	50	1/2	6-1/2"	7' - 0'	4" - 6-1/4"	6-3/8" - 8-5/8'	8-3/4" - 11"	497	1122
50, 83	50	(2) 1/4	6-1/2"	**	4" - 6-1/4"	6-3/8" - 8-5/8'	8-3/4" - 11"	497	1122

Trolley extension adders for wider beam flanges

1st Extension Add **\$61** for single lug, x2 for double lug.

2nd Extension Add **\$122** for single lug, x2 for double lug.

** Straight Track only.

GENERAL NOTES:

† To Complete catalog number: select type of hoist suspension by replacing † in catalog number with L for Lug Mounting, P for Push Trolley, H for Hand Geared Trolley or M for Motor Driven Trolley.

†† Select required speed points by replacing †† in catalog number with 1 or 2 to the base catalog number. Hoist adder for 2 speed is for 3:1 ratio control (except where noted *2:1) and is to be added to the single base price Use V for Variable Frequency Control. Price adders for variable frequency hoist control are found in the Options Section.

<h1>5 & 7½ Ton</h1>	<h2>Industrial User Price List</h2>	<h1>ELECTRIC WIRE ROPE</h1>	<h2>Shaw-Box Size 2</h2>
-------------------------	---	-----------------------------	------------------------------

Standard Headroom Double Reeved

5 Ton

Catalog Number	Lift Ft.	Spd fpm	Mtr HP	No. Ropes/Dia.	Headroom (inches)		Type Suspension								Hoist 2 Speed Adder
							Lug Mounted		Push Trolley		Hand Geared Trolley		Motorized Trolley		
					Lug Mtd.	Trolley	Price	Wt.	Price	Wt.	Price	Wt.	Price	Wt.	
72†05-018D13-††	18	13	5	6-5/16	37-1/4	38-5/8	11724	860	12913	1000	13327	1085	14625	1050	1248
72†05-018D19-††	18	19	7.5	6-5/16	37-1/4	38-5/8	11864	910	13048	1050	13463	1135	14762	1100	1671
72†05-018D27-††	18	27	10	6-5/16	37-1/4	38-5/8	12414	910	13601	1050	14014	1135	15310	1100	1671
72†05-035D13-††	35	13	5	6-5/16	37-1/4	38-5/8	12060	1175	14433	1540	14849	1600	17246	1635	1248
72†05-035D19-††	35	19	7.5	6-5/16	37-1/4	38-5/8	12200	1225	14569	1590	14982	1650	17386	1685	1671
72†05-035D27-††	35	27	10	6-5/16	37-1/4	38-5/8	12752	1225	15107	1590	15535	1650	17938	1685	1671

7½ Ton

Catalog Number	Lift Ft.	Spd fpm	Mtr HP	No. Ropes/Dia.	Headroom (inches)		Type Suspension								Hoist 2 Speed Adder
							Lug Mounted		Push Trolley		Hand Geared Trolley		Motorized Trolley		
					Lug Mtd.	Trolley	Price	Wt.	Price	Wt.	Price	Wt.	Price	Wt.	
72†07-023D14-††	23	14	7.5	8-5/16	32-1/8	33-1/2	15223	1225	17591	1590	18005	1650	20410	1685	1671

* Weight of single speed hoist

Motor-Driven only Trolley Specifications

Hoist Lift (ft.)	Trolley								
	Speed (fpm)	H.P.	Wheel Diameter	Minimum Radius	Beam Flange Width Range			2-Speed Add (3:1)	460 Volt VFC Add
					Standard	1st Ext.	2nd Ext.		
18	50	1/2	6-1/2"	7' - 0'	4" - 6-1/4"	6-3/8" - 8-5/8'	8-3/4" - 11"	497	1122
23, 35	50	(2) 1/4	6-1/2"	**	4" - 6-1/4"	6-3/8" - 8-5/8'	8-3/4" - 11"	497	1122

Trolley extension adders for wider beam flanges
 1st Extension Add **\$58** for single lug, x2 for double lug.
 2nd Extension Add **\$116** for single lug, x2 for double lug.

** Straight Track only.

GENERAL NOTES:

† To Complete catalog number: select type of hoist suspension by replacing † in catalog number with L for Lug Mounting, P for Push Trolley, H for Hand Geared Trolley or M for Motor Driven Trolley.

†† Select required speed points by replacing †† in catalog number with 1 or 2 to the base catalog number. Hoist adder for 2 speed is for 3:1 ratio control (except where noted *2:1) and is to be added to the single base price. Use V for Variable Frequency Control. Price adders for variable frequency hoist control are found in the Options Section.

Standard Features

Industrial User Price List

ELECTRIC WIRE ROPE Deck Mounted

Shaw-Box Size 2

Single Reeved Deck Mounted Hoists

Feature	3 Ton	5 Ton	7½ Ton	10 Ton
Service Class	H-4	H-4	H-4	H-4
Reeved	4 PS - 3/8"	4 PS - 3/8"	4 PS - 7/16"	6 PS - 7/16"
Hoist Gearing	Double Reduction Helical Gearing	Double Reduction Helical Gearing	Double Reduction Helical Gearing	Double Reduction Helical Gearing
Hook Assembly	Bearing-mounted 360 degree rotate	Bearing-mounted 360 degree rotate	Bearing-mounted 360 degree rotate	Bearing-mounted 360 degree rotate
Hoist Motor	30-minute rated TENV	30-minute rated TENV	30-minute rated TENV	30-minute rated TENV
Hoist Motor Brake	150% Nominal Torque DC disc	150% Nominal Torque DC disc	150% Nominal Torque DC disc	150% Nominal Torque DC disc
Load Brake	Weston type	Weston type	Weston type	Weston type
Hoist Control	1-speed	1-speed	1-speed	1-speed
Control Circuit voltage	115 Volts	115 Volts	115 Volts	115 Volts
Hoist Limit Switch	Upper block control circuit.	Upper block control circuit.	Upper block control circuit.	Upper block control circuit.
Rope Drum Diameter	9"	9"	9"	9"
Rope Drum Material *	Cast Iron	Cast Iron	Cast Iron	Steel
Sheave Diameter	9" on S.R. 6" on T.V.L	9" on S.R. 6" on T.V.L	9" on S.R. 6" on T.V.L	9" on S.R.
Sheave Material	Cast Iron	Cast Iron	Cast Iron	Cast Iron
Bearings	Anti-friction	Anti-friction	Anti-friction	Anti-friction
Motor TAS	Standard	Standard	Standard	Standard
Control Enclosure	NEMA 1	NEMA 1	NEMA 1	NEMA 1

*Steel on Double Lug models only

3, 5, 7½ & 10 Ton

Industrial User Price List

ELECTRIC WIRE ROPE Deck Mounted

Shaw-Box Size 2

Standard Headroom Single Reeved

3 Ton								
Catalog Number	Lift Ft.	Spd fpm	Mtr HP	No. Ropes/Dia.	Headroom (inches)	Type Suspension		Hoist 2 Speed Adder
						Deck Mounted		
						Price	Wt.*	
72D03-026S15-††	26	15	3	4-3/8	37-1/8	9707	870	1248
72D03-026S20-††	26	20	5	4-3/8	37-1/8	10671	885	1248
72D03-044S30-††	44	30	7.5	2-7/16	33-7/8	15050	865	1671
72D03-044S40-††	44	40	7.5	2-7/16	33-7/8	15500	865	1671
72D03-055S30-††	55	30	7.5	4-5/16	37-1/8	16881	1255	1671

5 Ton								
Catalog Number	Lift Ft.	Spd fpm	Mtr HP	No. Ropes/Dia.	Headroom (inches)	Type Suspension		Hoist 2 Speed Adder
						Deck Mounted		
						Price	Wt.*	
72D05-026S15-††	26	15	5	4-3/8	37-1/8	10119	885	1248
72D05-026S20-††	26	20	7.5	4-3/8	37-1/8	11084	935	1671
72D05-047S20-††	47	20	7.5	4-3/8	37-1/8	15500	1255	1671

7½ Ton								
Catalog Number	Lift Ft.	Spd fpm	Mtr HP	No. Ropes/Dia.	Headroom (inches)	Type Suspension		Hoist 2 Speed Adder
						Deck Mounted		
						Price	Wt.*	
72D07-022S14-††	22	14	7.5	4-7/16	37-3/4	13379	935	1671
72D07-038S14-††	38	14	7.5	4-7/16	37-3/4	16097	1250	1671

10 Ton								
Catalog Number	Lift Ft.	Spd fpm	Mtr HP	No. Ropes/Dia.	Headroom (inches)	Type Suspension		Hoist 2 Speed Adder
						Deck Mounted		
						Price	Wt.*	
72D10-025S14-††	25	14	10	6-7/16	38-3/4	16252	1350	1671

* Weight of single speed hoist

GENERAL NOTES:

†† Select required speed points by replacing †† in catalog number with 1 or 2 to the base catalog number. Hoist adder for 2 speed is for 3:1 ratio control and is to be added to the single base price. Use V for Variable Frequency Control. Price adders for variable frequency hoist control are found in the Options Section.

Electrical Options

Subject	Page No.
Fuse Panel	32
Control Enclosures	32
Push Button Modification	32
Trolley Traverse Brake	32
Limit Switches	32
Main Line Panel	32
Inverter Controls	32
Explosion Proof Control	33

Mechanical Options

Subject	Page No.
Operation on Wider Flanges	34
Drop Lugs	34
Stainless Steel Wire Rope	34
Spark Resistant Lower Blocks & Hooks	34
Spark Resistant Trolley Wheels	34

Single & Double Reeved	Industrial User Price List	ELECTRIC HOIST OPTIONS	Shaw-Box Size 2
-----------------------------------	-----------------------------------	-------------------------------	------------------------

FEATURE	DESCRIPTION	PRICE
FUSE PANEL	Motorized "hoist or trolley only"	347
	Motorized hoist & motorized trolley	402
CONTROL ENCLOSURES	Shaw-Box weather resistant	
	Hoist only	133
	Hoist & motor driven trolley.....	300
	NEMA Type 4/12 (includes modification of standard block limit switch)	
	Single speed hoist with motor driven trolley	1147
	Two speed motor driven trolley	1328
PUSH BUTTON MODIFICATIONS (IP65-Equivalent to NEMA 4)	Additional buttons (per pair of buttons)	
	Stop-start	108
	Single speed.....	50
	Two speed	50
	Deduct for omitting push button assembly	
	Single speed hoist/single speed trolley..... deduct.....	-(77)
Two speed hoist/single or two speed trolley..... deduct.....	-(90)	
	Additional push button cable (per ft.)	3
TROLLEY TRAVERSE BRAKE (A.C. Disc Type)	Single motor trolley	488
	Double motor trolley (10 ton 700 series only)	975
LIMIT SWITCHES	Geared type upper and lower (control circuit) 2 element NEMA 4/12 (Adds 3" to headroom)	471
MAINLINE PANEL (Includes stop-start buttons in pushbutton station and hoist and/or trolley motor fusing)	Magnetic disconnect, Trolley mounted	948

STRIP HEATERS - (120 volt, wattage depends on motor/panel size)	In control panel with thermostat (per panel)	541
	In motor w/o thermostat (per motor).....	192

INVERTER CONTROLS FOR SIZE 2 HOISTS - HOIST OR TROLLEY MOTION

Maximum HP	Inverter Size	List Price Adds	
		230 volts	460 volts
0.5	G+ Mini	1013	1122
1		1054	1287
5		2865	2894
7½		3440	3753
10		3848	4216

Maximum HP	Inverter Size	List
		575 volts
3	G+	4341
5		5049
7½		5085
10		5614

700 Series Standard Features:
 2-Step infinitely variable
 Modification of motion pushbuttons to 2-Step
 NEMA 4/12 enclosure
 Dynamic Braking Resistor
 Key Pad Programming

Set at 10 HZ low and 60 HZ high
 Fusing
 Rated for H-4 Hoist or Trolley Service
 Applicable on 1200 R.P.M. & Greater Motors
 Ranges greater than 6:1 available - Consult Factory

Single & Double Reeved

Industrial User Price List

ELECTRIC HOIST OPTIONS

Shaw-Box Size 2

700 Series Hoist Motion Only Electrical Explosion Proof Adders*

prices are to be added to the base price of a single or two speed hoist

Division 1				
HP	Class I Group D (Includes Motor TAS)		Class II Group F & G (Includes Motor TAS)	
	1 Speed	2 Speed	1 Speed	2 Speed
3	10666	11985	10110	12068
5	11517	12730	11514	12446
7.5	11886	13635	12068	13326
10	13007	14700	12630	14493

Division 2				
HP	Class I Group C & D (Includes Motor TOLR)		Class II Group F & G (Includes Motor TAS)	
	1 Speed	2 Speed	1 Speed	2 Speed
3 - 10	8264	9499	1184	1370

Explosion Proof Control

Trolley Motion Only (Not Including Brake) Explosion Proof Adders*

prices are to be added to the base price of a single or two speed trolley with hoist

Not applicable for Trolley only pricing - based on purchase with hoist

For CSA and Variable Frequency Applications Contact Factory

Division 1				
HP	Class I Group D (Includes Motor TAS)		Class II Group F & G (Includes Motor TAS)	
	1 Speed	2 Speed	1 Speed	2 Speed
¼	1482	2552	1798	N/A
½	1551	2801	1841	N/A
2 (¼)	2426	4574	2491	N/A
2 (½)	2569	5105	2696	N/A

Division 2				
HP	Class I Group C & D (Includes Motor TOLR)		Class II Group F & G (Includes Motor TAS)	
	1 Speed	2 Speed	1 Speed	2 Speed
1 (¼) - 2 (½)	1147	1147	*	*

* NEMA 4/12 control box modification covered by hoist control adder.

Intrinsically Safe Pendant Station

Intrinsically safe control systems permit use of the standard control pendant station giving the operator the benefit of a smaller, lighter and easier to handle pendant than the conventional explosion proof models. Intrinsically safe systems engage a motion's contactors with electrical components operating at voltages too low to cause ignition of gases or dusts. While the motion's controls must still be housed in a NEMA 7 or 9 enclosure, the standard pendant can be used.

Price adds are in addition to the Hoist & Trolley motor/control adds.
The base hoist has to have all required standard pushbuttons priced in.

Price add per pair of buttons	1-Speed Control	643
	2-Speed Control	1278

Single & Double Reeved

Industrial User Price List

MECHANICAL HOIST OPTIONS

Shaw-Box Size 2

Spark Resistant Rope (Stainless Steel)

Single Reeved 700 Series & Size 2 Hoists			
Capacity (tons)	Lift	Number of Ropes	Price per Hoist
3	26 ft	4/1 - 5/16	296
Double Reeved TVL 700 Series & Size 2 Hoists			
1	83 ft	4/2 - 3/16	237
3	27 ft	4/2 - 5/16	307
3	50 ft	4/2 - 5/16	569

Series 700 - Size 2

Solid bronze lower block frame with bronze sheave pin caps and bronze hook with stainless steel hook latch

1 ton, 4 pts rope	4236
3 ton, 4 pts rope	4373
5 ton, 4 pts. rope	4867
5 ton, 6 pts. rope	5294
7½ & 10 ton, 4 pts. rope	5854
7½ & 10 ton, 6 pts. rope	6089
7½ & 10 ton, 8 pts. rope	6282

Series 700 - Size 2

Copper-plated steel lower block frame and hook with stainless steel hook latch and bronze sheave pin caps

1 ton, 4 pts rope	1947
3 ton, 4 pts rope	1968
5 ton, 4 pts. rope	2208
5 ton, 6 pts. rope	2057
7½ & 10 ton, 4 pts. rope	3729
7½ & 10 ton, 6 pts. rope	4419
7½ & 10 ton, 8 pts. rope	4765

Spark Resistant Trolley Wheels (price each) 6½" wheel diameter632

Over Capacity Lift Protection Weight Watcher Overload
 Built in mechanical overload device - Factory Installed.....435

**Single &
Double Reeved**

**Industrial User
Price List**

**MECHANICAL HOIST
OPTIONS**

**Shaw-Box
Size 2**

FOR TROLLEY OPERATION ON:

Thicker Beam Flange (price per trolley)

6½” Diameter Wheel Trolleys (will add approximately 1” to headroom)

To a maximum thickness of 1½”

Add to standard, first or second

extension pricing one trolley (lug) 575

extension pricing two trolleys (lugs) (covers 2 trolleys) 885

Wider Beams

6½” Diameter Wheel Trolleys (will add approximately 4½-5” to headroom)

To a maximum thickness of 1½”

Add to base hoist & trolley pricing

One Trolley

11 1/8” to 15” 1143

15 1/8” to 18 1/8” 1328

18 1/2” to 22” 1511

Two Trolley (covers 2 trolleys)

11 1/8” to 15” 1725

15 1/8” to 18 1/8” 2094

18 1/2” to 22” 2493

Recommended Hoist Motion Only Spare Parts

Listed below are recommended spare parts packages by hoist type. These prices are based on standard cataloged hoists and the **packages being purchased with and for new hoists before they ship.** Prices **do not** cover stainless steel rope, spark-proof, explosion proof or special options beyond the base cataloged hoist features

Standard, cataloged 700 Series Size 2 Spare Parts Package 1548

Includes; load brake discs, motor brake discs and springs,
gear case gasket, brake coil & controller, transformer,
reversing contactor and wire rope.

5 - 10 Ton**Industrial User
Price List****ELECTRIC WIRE ROPE
Top-Running Trolleys****Shaw-Box
Size 2**

Standard Features

Feature	700 Series Size 2
Tons Capacity	5, 7½ & 10
Service Class	HMI - Class H4
Reeved	Single or Double
Rope Guide	No
Hoist Gearing	Helical in oil bath
Hoist Load Brake	Mechanical
Hoist Motor	One or two speed squirrel cage with TAS Two speed is 3:1 ratio 30 minute duty Class F insulation TENV
Hoist Motor Brake	DC disc
Hoist Limit Switch	"Block upper & geared U/L"
Hoist Control	"Magnetic contactor 1-speed standard"
Trolley Gearing	Worm
Trolley Motor	One or two speed squirrel cage with TAS Two speed is 3:1 ratio 30 minute duty Class F insulation TENV
Trolley Brake	Optional
Trolley Control	"Magnetic contactor 1-speed standard"
Wheels	"7" double flanged steel @ 400 - 450 BHN"
Bumpers	Optional
Bearings	Anti-friciton throughout
Motor TAS	Standard
Control Enclosure	NEMA 4/12

All panels ship loose as standard with leads pulled to a J-box, except for the World Series which is mounted and wired as a standard.

5 Ton

Industrial User Price List

ELECTRIC WIRE ROPE Single Reeved

Shaw-Box Size 2

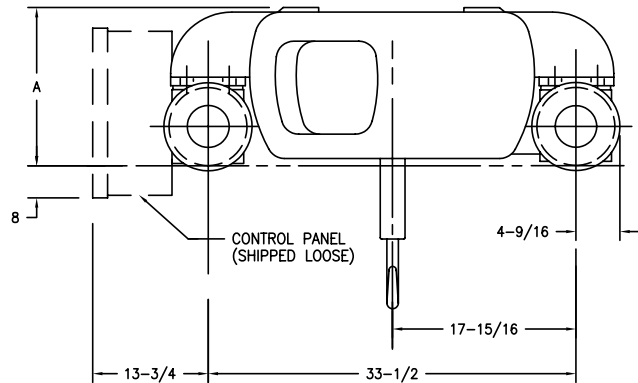
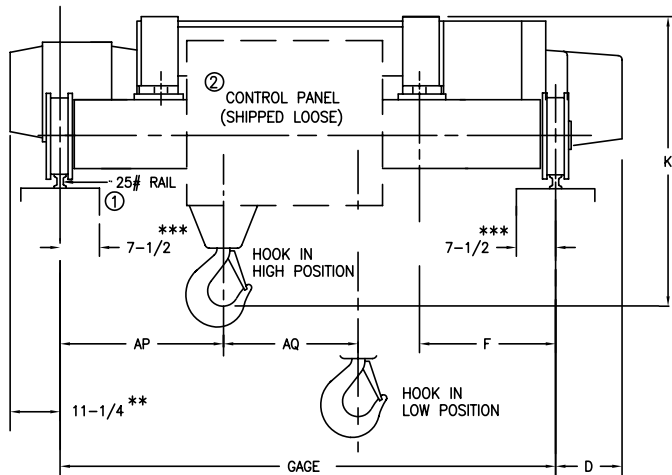
Catalog Number	Max Lift (ft)	Gage (in)	Hoist Speed (fpm)	Hoist Motor	Rope No. & Dia. (in)	Traverse Speed (fpm)	Wheel Dia. (in)	Traverse Motor	Wt. (lbs)	1-Speed Both Motions	2-Speed Adders	
											Hoist	Trolley
72T05-026S15-*48	26	48	15	5	4-3/8	70	7	0.75	1585	17910	1248	497
72T05-026S20-*48			20	7.5					1635	18876	1671	497
72T05-047S20-*66	47	66	20	7.5					2205	23865	1671	497
72T05-047S20-*78		78	20	7.5					2285	24497	1671	497

*When ordering, the suffix 1 or 2 is added to indicate the number of speed points. Use V for Variable Frequency.

Note: Prices include a junction box with all leads pulled to the box. Prices do not include mounting or wiring of the panel.

Add \$313 mount and wire in the panel.

Dimensional Drawings (In Inches)



** Hoist motor or traverse motor — whichever is larger.

*** Max. dimension from \perp of rail to inside of girder to clear rope off of drum.

Lift (ft)	Gage	A	D	F	K	AP	AQ	Max Wheel Load
26	48	14-5/16	10	10	37-1/8	23-3/4	4-7/8	3047
47	66		9-7/8			26-3/8	8-5/8	3883
	78		38-3/8		3488			

↙ Maximum A.S.C.E. Rail size is 25 - 40# for 7" wheel.

← Panel is approximately 30" x 20" x 8.8" with a left side vertical hinge.

Trolleys with 48" gage or wide girders may not accommodate the panel as illustrated.

7½ Ton

Industrial User Price List

ELECTRIC WIRE ROPE Single Reeved

Shaw-Box Size 2

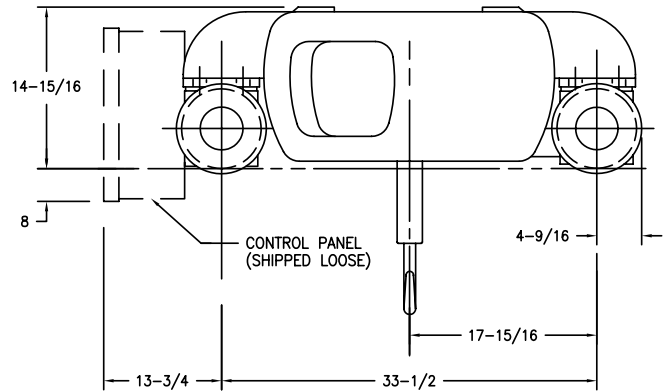
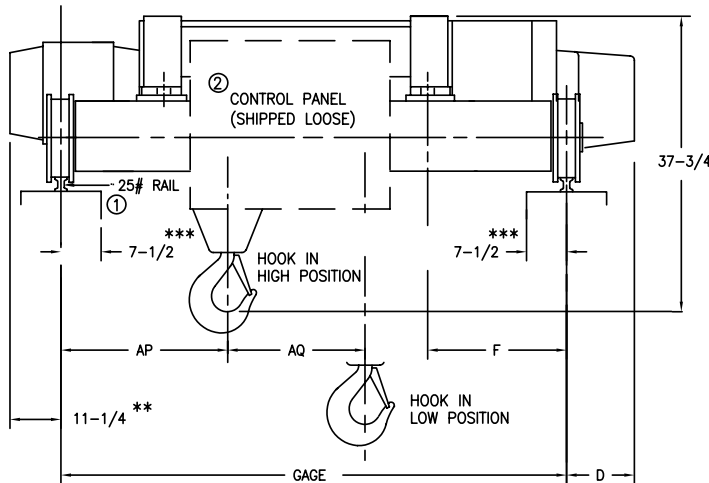
Catalog Number	Max Lift (ft)	Gage (in)	Hoist Speed (fpm)	Hoist Motor	Rope No. & Dia. (in)	Traverse Speed (fpm)	Wheel Dia. (in)	Traverse Motor	Wt. (lbs)	1-Speed Both Motions	2-Speed Adders	
											Hoist	Trolley
72T07-022S14-*48	22	48	14	7.5	4-7/16	70	7	0.75	1635	21173	1671	497
72T07-022S14-*66		66							1785	21465	1671	497
72T07-038S14-*66	38	78							2105	24183	1671	497
72T07-022S14-*78	22								1865	22097	1671	497
72T07-038S14-*78	38								2285	25090	1671	497

*When ordering, the suffix 1 or 2 is added to indicate the number of speed points. Use V for Variable Frequency.

Note: Prices include a junction box with all leads pulled to the box. Prices do not include mounting or wiring of the panel.

Add \$313 mount and wire in the panel.

Dimensional Drawings (In Inches)



** Hoist motor or traverse motor — whichever is larger.

*** Max. dimension from ϕ of rail to inside of girder to clear rope off of drum.

Lift (ft)	Gage	D	F	AP	AQ	Max Wheel Load
22	48	10	10	23-1/4	4-3/4	4337
	66	1-13/16	25-5/8	26-1/8		5100
	78		27-1/4	36-3/4		4362
38	66	9-7/8	10-3/8	26-5/8	8-1/2	5669
	78			38-1/8		5117

↙ Maximum A.S.C.E. Rail size is 25 - 40# for 7" wheel.

← Panel is approximately 30" x 20" x 8.8" with a left side vertical hinge.

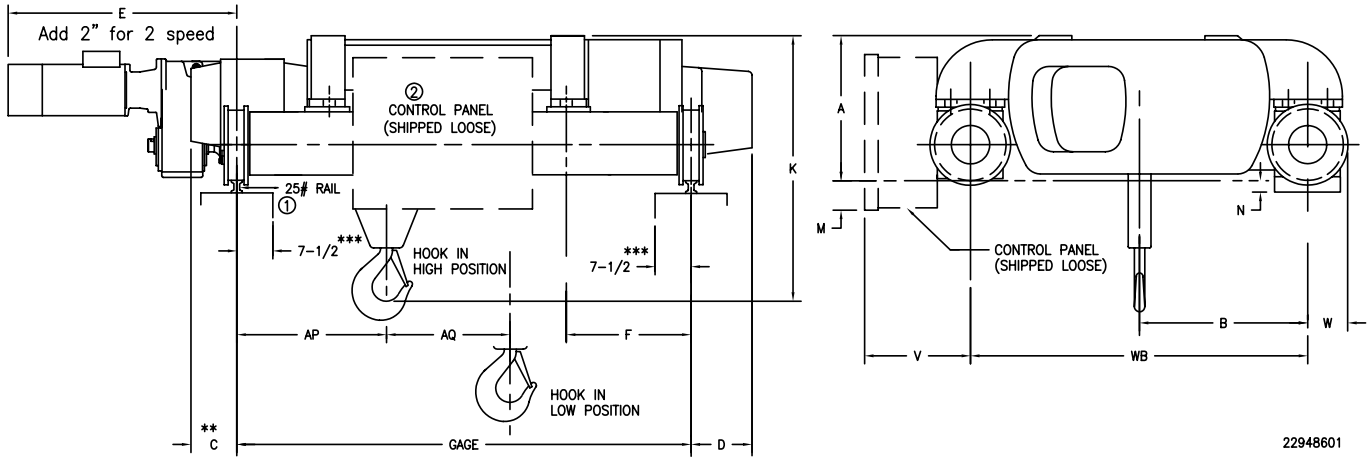
Trolleys with 48" gage or wide girders may not accommodate the panel as illustrated.

<h1>10 Ton</h1>	<h2>Industrial User Price List</h2>	<h2>ELECTRIC WIRE ROPE Single Reeved</h2>	<h2>Shaw-Box Size 2</h2>
-----------------	---	---	------------------------------

Catalog Number	Max Lift (ft)	Gage (in)	Hoist Speed (fpm)	Hoist Motor	Rope No. & Dia. (in)	Traverse Speed (fpm)	Wheel Dia. (in)	Traverse Motor	Wt. (lbs)	1-Speed Both Motions		2-Speed Adders	
										Hoist	Trolley	Hoist	Trolley
72T10-025S14-*66	25	66	14	10	6-7/16	70	7	0.75	2200	24337	1671	497	
72T10-025S14-*78		78											1671

*When ordering, the suffix 1 or 2 is added to indicate the number of speed points. Use V for Variable Frequency.
Note: Prices include a junction box with all leads pulled to the box. Prices do not include mounting or wiring of the panel.
Add \$313 mount and wire in the panel.

Dimensional Drawings (In Inches)



22948601

Lift (ft)	Gage	A	B	C	D	E	F	K	M	N	V	W	AP	AQ	WB	Max Wheel Load
25	66	16-5/16	17-15/16	11-1/4	10-3/8	N/A	10	38-3/4	8	1/2	13-3/4	4-9/16	28-1/8	5-9/16	33-1/2	6570
	78												40-3/16			6049

** Hoist motor or traverse motor — whichever is larger.

*** Max. dimension from ϕ of rail to inside of girder to clear rope off of drum.

↙ Maximum A.S.C.E. Rail size is 25 - 40# for 7" wheel.

← Panel is approximately 30"x20"x8.8" with a left side vertical hinge.

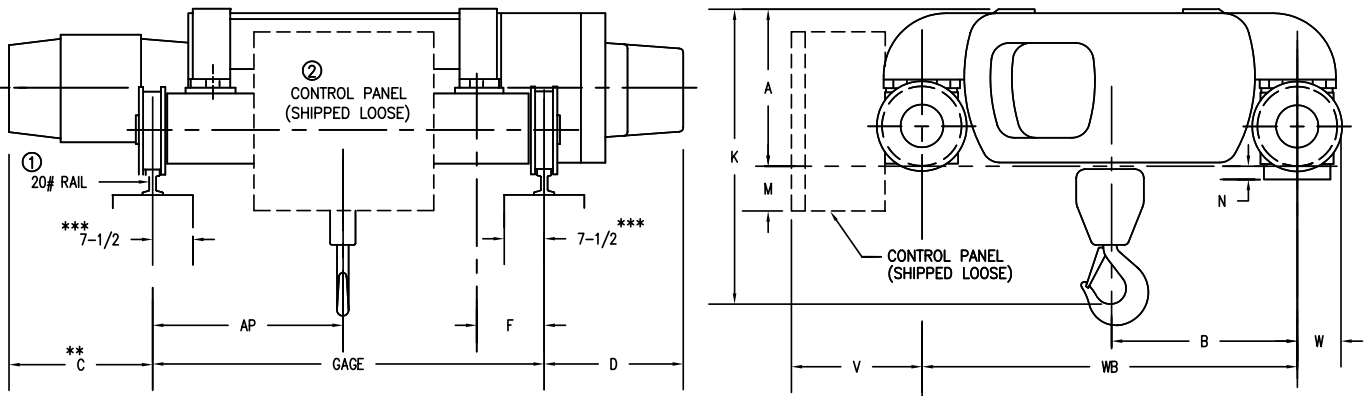
Trolleys with 48" gage or wide girders may not accommodate the panel as illustrated.

<h1>5 Ton</h1>	<h2>Industrial User Price List</h2>	<h2>ELECTRIC WIRE ROPE Double Reeved</h2>	<h2>Shaw-Box Size 2</h2>
----------------	---	---	------------------------------

Catalog Number	Max Lift (ft)	Gage (in)	Hoist Speed (fpm)	Hoist Motor	Rope No. & Dia. (in)	Traverse Speed (fpm)	Wheel Dia. (in)	Traverse Motor	Wt. (lbs)	1-Speed Both Motions	2-Speed Adders	
											Hoist	Trolley
72T05-018D13-*48	18	48	13	5	6-5/16	70	7	0.75	1585	20389	1248	497
72T05-018D19-*48			19	7.5					1635	20531	1671	497
72T05-018D27-*48			27	10					1690	21081	1671	497
72T05-018D13-*66		66	13	5					1735	20685	1248	497
72T05-018D19-*66			19	7.5					1785	20825	1671	497
72T05-018D27-*66			27	10					1840	21376	1671	497
72T05-035D13-*66	35	78	13	5					2055	21020	1248	497
72T05-035D19-*66			19	7.5					2105	21159	1671	497
72T05-035D27-*66			27	10					2160	21710	1671	497
72T05-018D13-*78	18		13	5					1815	21316	1248	497
72T05-018D19-*78			19	7.5					1865	21457	1671	497
72T05-018D27-*78			27	10					1920	22006	1671	497
72T05-035D13-*78	35	13	5	2235	21929	1248	497					
72T05-035D19-*78		19	7.5	2285	22067	1671	497					

*When ordering, the suffix 1 or 2 is added to indicate the number of speed points. Use V for Variable Frequency.
Note: Prices include a junction box with all leads pulled to the box. Prices do not include mounting or wiring of the panel.
Add \$313 mount and wire in the panel.

Dimensional Drawings (In Inches)



Lift (ft)	Gage	A	B	C	D	F	K	M	N	V	W	AP	WB	Max Wheel Load
18	48	13-3/4	18-1/2	11-1/4	5-5/8	14-1/2	37-1/16	8	0	13-3/4	4-9/16	24	33-1/2	3181
	66				3-5/8	23-1/2						33		3244
	78	0			29-1/2	39						3206		
35	66	13-3/4			4-11/16	15-11/16						33-3/16		3292
	78				1-13/16	21-7/16						39		3318

** Hoist motor or traverse motor — whichever is larger.

*** Max. dimension from \perp of rail to inside of girder to clear rope off of drum.

↙ Maximum A.S.C.E. Rail size is 25 - 40# for 7" wheel.

↖ Panel is approximately 30"x20"x8.8" with a left side vertical hinge.

Trolleys with 48" gage or wide girders may not accommodate the panel as illustrated.

7½ Ton

Industrial User Price List

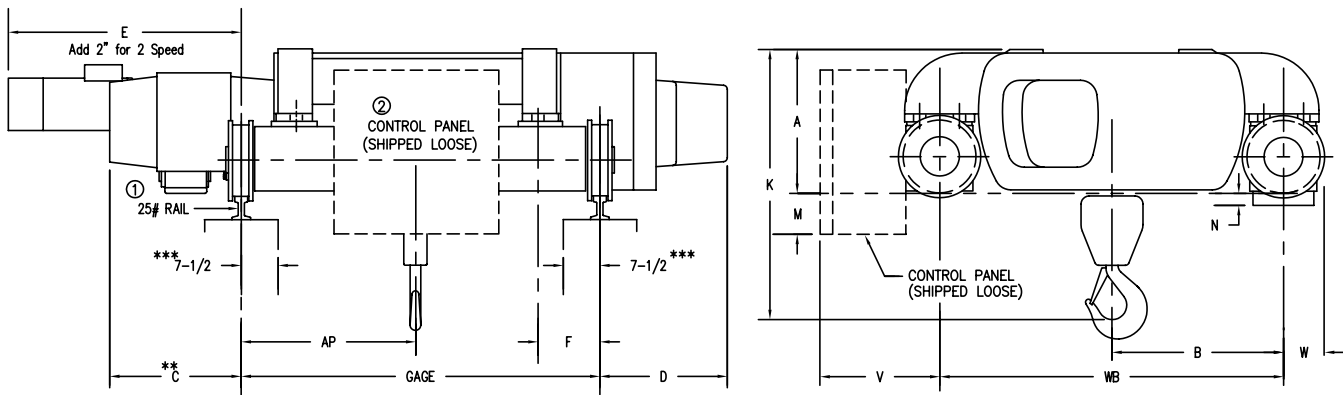
ELECTRIC WIRE ROPE Double Reeved

Shaw-Box Size 2

Catalog Number	Max Lift (ft)	Gage (in)	Hoist Speed (fpm)	Hoist Motor	Rope No. & Dia. (in)	Traverse Speed (fpm)	Wheel Dia. (in)	Traverse Motor	Wt. (lbs)	1-Speed Both Motions	2-Speed Adders	
											Hoist	Trolley
72T07-023D14-*66	23	66	14	7.5	8-5/16	70	7	0.75	2100	24183	1671	497
72T07-023D14-*78		78									1671	497

*When ordering, the suffix 1 or 2 is added to indicate the number of speed points. Use V for Variable Frequency.
Note: Prices include a junction box with all leads pulled to the box. Prices do not include mounting or wiring of the panel.
Add \$313 mount and wire in the panel.

Dimensional Drawings (In Inches)



22949101

Lift (ft)	Gage	A	B	C	D	E	F	K	M	N	V	W	AP	WB	Max Wheel Load
23	66	14	21-11/16	10-3/8	4-11/16	N/A	15-11/16	35-5/16	8	0	13-3/4	4-9/16	33-3/16	33-1/2	4631
	78				1-3/16		21-11/16						39		4657

** Hoist motor or traverse motor — whichever is larger.

*** Max. dimension from ϕ of rail to inside of girder to clear rope off of drum.

↙ Maximum A.S.C.E. Rail size is 25 - 40# for 7" wheel.

← Panel is approximately 30"x20"x8.8" with a left side vertical hinge.

Trolleys with 48" gage or wide girders may not accommodate the panel as illustrated.

Electrical Options

Subject	Page No.
Control Mounting and Wiring	43
Two Speed Traverse	43
Control Deducts	43
Electronic Soft Start	43
Enclosures	43
NEMA Rated Contactors	43
Fuses	43
Special Voltages	44
Thermal Protection	44
Limit Switches	44
Trolley Traverse Brake	44
Over Capacity Limit Switch	44
Hoist Motor Brake	44
Variable Frequency Control	45
Flux Vector Control	45-46

Mechanical Options

Subject	Page No.
Trolley Bumpers	46
Hook Latch	46
Optional Trolley Speeds	46
Special Paint	46
Auxiliary Hoist	46

Modifications & Accessories	Industrial User Price List	ELECTRIC WIRE ROPE	Shaw-Box Size 2 Top-Running
--	---------------------------------------	---------------------------	--

CONTROL MOUNTING & WIRING CHARGE (For Size 2 Trolley Hoists Only)
 Provide Junction Box, pull leads, run wires, ship Panel Loose..... 132
 Mount & Wire in Panel..... 322

CONTROL DEDUCTS
 Omits: Contactors, transformer & pushbutton
 Leaves: Brake and brake control module.

700 Series Hoist
 2-5 hp (single speed) deduct -(180)
 2-5 hp (two speed)..... deduct -(225)
 7½-10 hp (single speed) deduct -(416)
 7½-10 hp (two speed)..... deduct -(624)

Trolley
 Single speed deduct -(104)

ELECTRONIC SOFT START FOR TROLLEY TRAVERSE: (Ratings are Total HP)

Single Speed: 230 Volt 3/4 HP Max. 335
 230 Volt 2 HP Max. 541
 230 Volt 6 HP Max. 1223
 460 Volt 2 HP Max. 335
 460 Volt 5 HP Max. 541
 460 Volt 10 HP Max. 1223
 575 Volt 10 HP Max. 1223

Two Speed: 230 Volt 3/4 HP Max. 435
 230 Volt 2 HP Max. 541
 230 Volt 6 HP Max. 1223
 460 Volt 2 HP Max. 435
 460 Volt 5 HP Max. 541
 460 Volt 10 HP Max. 1223
 575 Volt 10 HP Max. 1223

ENCLOSURES:
 NEMA 4/12 **Standard on all size 2 Top Running**

NEMA RATED CONTACTORS:

HOIST CONTROL:
 1-5 HP (single speed)..... 924
 1-5 HP (two speed) 1236
 1-5 HP (three speed) 1335
 1-5 HP (five speed) 1599
 7 1/2 - 10 HP (single speed) 1208
 7 1/2 - 10 HP (two speed) 1961
 7 1/2 - 10 HP (three speed)..... 2124
 7 1/2 - 10 HP (five speed) 2388
 15-20 HP (single speed)..... 1574
 15-20 HP (two speed) 2161
 15-20 HP (three speed)..... 3145
 15-20 HP (five speed) 4695

TROLLEY CONTROL:
 Single Speed 924
 Two Speed 1236
 Three Speed..... 1335
 Five Speed 1599

FUSES:
 Hoist Only..... 347
 Hoist and Trolley..... 402

Modifications & Accessories	Industrial User Price List	ELECTRIC WIRE ROPE	Shaw-Box Size 2 Top-Running
--	---------------------------------------	---------------------------	--

SPECIAL VOLTAGE: (Add for each motor)	
190/3/50 hertz or 380/3/50 hertz (reduces speeds and HP by 1/6)	
1/2-5 hp.....	156
7 1/2-20 hp.....	521
208/3/60 HERTZ OR 575/3/60.....	N/C
THERMAL PROTECTION: (PER MOTION)	
Thermostatic Type in Motor Winding, single or two speed control.....	Standard
Thermal Overload Relays:	
For I.E.C. (Standard) Contactor Control	
Single Speed Control.....	132
Two Speed Control.....	194
For NEMA Contactor Control	
Single Speed Control.....	197
Two Speed Control.....	292
LIMIT SWITCHES:	
Hoist (adds to base hoist price)	
Size 2 Deck Mounted Hoists	
Geared type upper and lower (control circuit) 2 element (NEMA 4)	Standard
Block operated (control circuit) limit switch (NEMA 4)	Standard
Block operated power contactor type (NEMA 4) Adds 4" to headroom	1392
Block operated upper power circuit type (NEMA 1) *Adds 12" to headroom	
Thru 10 HP	5523
*Add \$358 for NEMA 4	
Trolley Traverse	
Trolley travel type (NEMA 4/12).....	1387
A.C. DISC TRAVERSE BRAKE, 50% TORQUE	485
OVER CAPACITY LIFT PROTECTION	
Single reeved only (adds 10" to headroom)	
Weight Watcher Overload (not available on 25 hp or larger motors)	
Built in mechanical overload device factory installed.....	427
HOIST MOTOR BRAKE:	
DC Disc type (all hoists in this price book).....	Standard
Adds to the trolley width. Check Specification book for Dimension.	

Modifications & Accessories

Industrial User Price List

ELECTRIC WIRE ROPE

Shaw-Box Size 2 Top-Running

VARIABLE FREQUENCY CONTROL - 2-STEP INFINITELY VARIABLE

Prices are to be added to the base hoist/trolley price with single speed control. The standard control is programmed for 2-step, infinitely variable on the second step. Price adds include; wiring, panel modifications, deletion of the standard control and modifications of the motion's pushbuttons for 2-step control. **These are add prices, not stand alone panel prices. Do not deduct for the standard controls.** To order, use a V for the last digit of the hoist/trolley catalog number to specify type of control.

Note: Three step control is available by specifying on the order and pricing out the add for 3-step pendant buttons. For explosion proof applications contact factory.

Inverter Controls for 700

Series Deck Hoists - For Hoist or Trolley Motion

Maximum HP	Inverter Size	List Price Adds		Maximum HP	Inverter Size	List
		230 volts	460 volts			575 volts
1	G+ Mini	1054	1287	3	G+	5303
2		1350	1287	5		5267
3		1523	1490	7½		5436
5		1932	1882	10		6291
7½		2507	2636	15		12962
10		2918	3062	20		13720
15	G+	8111	8227			
20		8558	10211			

Note: Apply to factory for pricing on these features:
Wound Rotor Motors
Eddy Current Load Brakes

Standard Features:

2-Step infinitely variable
NEMA 4/12 enclosure
Key Pad Programming
Fusing
Applicable on 1200 R.P.M. & Greater Motors

Modification of motion pushbuttons to 2-Step
Dynamic Braking Resistor
Set at 10 HZ low and 60 HZ high
Rated for H-4 Hoist or Trolley Service
Ranges greater than 6:1 available - Consult Factory

Flux Vector Control for 700 Series Deck Mounted Hoists

Add for Flux Vector over base single speed hoist control

The following prices are to be added to the base price of a single speed hoist.

Prices Include:

Flux Vector Drive	5-step control as standard
Dynamic braking resistor	NEMA 4/12 enclosure
External, Air-Cooled A.C. Disc Brake	Continuous rated motor with Class H Insulation
Motor-mounted encoder	No pushbuttons included

***Panel shipped loose.** Please call factory for panel size. Standard hinged is bottom/horizontal. Call for options on other panel door arrangements.

Hoist Motor		700 Series Deck		
H.P.	R.P.M.	230 Volts	460 Volts	575 Volts
5	1800	11227	11700	11999
	1200	12095	12571	12903
7½	1800	11246	11852	12160
	1200	12248	12824	13125
10	1800	13284	13460	13794
	1200	14454	14631	15091
15	1800	17080	16968	17280
20		18398	20048	20318

*Mounting, wiring and testing charge for the 700 Series Trolley is \$1283

(continued on next page)

**Modifications
& Accessories**

**Industrial User
Price List**

ELECTRIC WIRE ROPE

**Shaw-Box
Size 2
Top-Running**

1200 R.P.M. MOTORS — WHERE USED

Flux Vector price adds for a given horsepower vary depending on the motor R.P.M. Listed are the cataloged hoists that have 1200 R.P.M. motors. However, if you have a special application or any questions, please do not hesitate to contact the factory.

700 Series Trolleys

Tons Capacity	Series	Reeved For	Feet Lift	Hoist Speed	Hoist H.P.
5	Size 2	T.V.L.	18	13	5
			35		
7.5	Size 3		37	19	10
			59		
10			26	14	
			42		
			57		
15			16	9	
			26		
			36		
20		20	8		
		27			

TROLLEY BUMPERS:

Rubber..... 488
Spring..... 738

HOOK LATCH:

Spring TypeStandard

Bullard Type: (hook & latch) Will increase headroom and delivery lead time. Consult factory for details

5 ton capacity..... 1068
7 1/2 - 10 ton capacity..... 2911
15 ton capacity..... 3353
20 ton capacity..... Contact Factory
25 ton capacity..... Contact Factory

OPTIONAL TROLLEY TRAVERSE SPEEDS:

700 Series Size 2 trolley (7" wheels, 70 F.P.M. standard speed)

50 F.P.M. (50 F.P.M. Suitable for Single speed or V.F.C control. Not for 2 speed) 449
100 F.P.M. 349

SPECIAL PAINT:

	Topcoat	Primer	Price
Solvent Based	Omaha Orange S-W #F75EC2	Shopcoat Primer S-W #E61AC82, Gray	801
Water Based	Blue S-W Kem Aqua 280 #3015C	Blue S-W Kem Aqua 70P #3015C	Std.
	Yellow S-W Kem Aqua 280 #123C	Yellow S-W Kem Aqua 70P #123C	167
	CM Orange S-W Kem Aqua 280 # F78E502	Yellow S-W Kem Aqua 70P #123C	167
	Navy Gray	T.B.D.	Consult Factory

Shaw-Box epoxy primer & finish (blue or yellow) add:

5 thru 7 1/2 ton.....917
10 ton thru 25 ton.....977

